



User Guide

(Updated 2002)



ACDSee  **1.2**
Mobile for Palm OS[®]

© ACD Systems Ltd. 2002, 2001 All rights reserved.

Table of Contents

ACD Systems at the Hub of Digital Imaging	1
Chapter 1 Introduction	3
Chapter 2 Setting Up ACDSee Mobile	4
System Requirements	4
Installing and Uninstalling	5
ACDInTouch	5
Starting ACDSee Mobile for Palm OS®	6
Chapter 3 The Desktop Application	7
The User Interface	7
Adjusting Settings	8
Private Image Settings	8
Adding and Removing Images	8
Exporting Images	9
Previewing and Resizing Images	10
Cropping Images	11
Adding Descriptions	11
Chapter 4 The Palm OS Application	13
The User Interface	13
Menu Commands	13
Viewing Images	15
Memory Sticks, Secure Digital and Compact Flash Cards	15
Setting Image Properties	16
Categorizing Images	17
Beaming Images	18
Running Slide Shows	18
Appendix 1: Compatible Palm OS® Devices	19
Appendix 2: Supported Image Formats	20
Appendix 3: Contacting ACD Systems	21
Technical Support	21
Feedback	21
Index	23

ACD Systems at the Hub of Digital Imaging

Based in Victoria, British Columbia, Canada, ACD Systems designs, develops and markets digital imaging and corporate communications software that meets the needs of home and professional users. ACD has millions of consumer users and over 33,000 corporate customers including many Fortune 500 companies. To serve our global customers well, our web content is available in 12 languages along with many of our products for PC and Macintosh®.

ACD Systems continues to capitalize on the explosive growth in the use of digital images via cameras, scanners, PDAs and the Internet. We have strong strategic alliances with value added resellers (VARs), original equipment manufacturers (OEMs), retailers, software publishers and distributors throughout North America and worldwide. Plus, our unique platform model and Software Development Kit (SDK) is available to third-party companies to develop their own imaging solutions that can be integrated with our software.

1

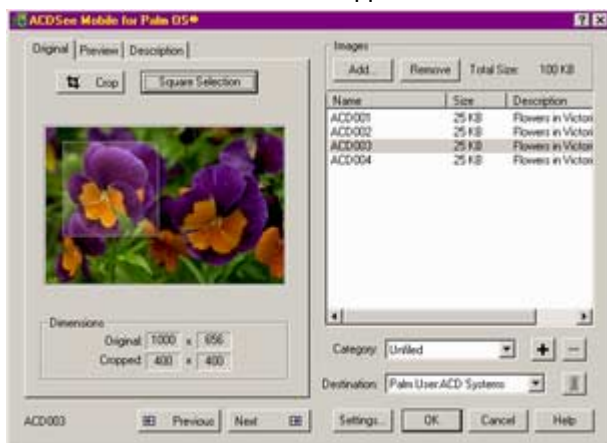
Chapter 1

Getting Started

ACDSee Mobile for Palm OS® exports images from your computer to your Palm OS® handheld, where you can view, manage, and share images. It helps you organize your images, add descriptions and security, and make modifications using crop and preview features. To export images to a Palm OS handheld, ACDSee Mobile converts images to the .pdb palm readable format (Palm Database File) and then places them in queue until the next HotSync® operation.

ACDSee Mobile supports SecureDigital cards (for Palm™ handheld devices), Compact Flash cards (for Handspring™ Visor devices), and Memory Stick® removable media (for Sony Clié™ devices). You can save images directly to an SD card or Memory Stick from your PC, and view and organize images on a Memory Stick, SD or Compact Flash card from your Palm OS handheld.

ACDSee Mobile consists of two applications:

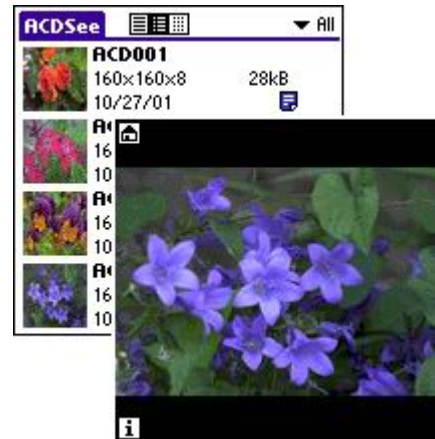


A stand-alone computer application or plug-in that works with both ACDSee and PicaView, where you can:

- Convert images to the Palm Readable Format.
- Crop images.
- Change dimensions.
- Specify the color depth of images.
- Export images directly to SD cards and Memory Sticks.

An application for your Palm OS handheld where you can:

- Choose from three different Browsing view modes.
- Categorize images.
- Add notes to images.
- Protect images using the Palm Security Feature.
- Beam images to other Palm OS handheld units.



2

Chapter 2

Setting Up ACDSee Mobile

This chapter guides you through the installation process, provides information about minimum system requirements, starting the program after installation, launching from other applications, uninstalling, and keeping informed through the ACDInTouch service.

System Requirements

ACDSee Mobile runs on computer systems meeting the minimum requirements specified below. For improved performance, we recommend a system that exceeds these requirements.

Minimum PC System Requirements

- Windows 95/98/NT 4.0/2000/Me/XP
- 32 MB RAM
- Pentium class processor
- 2 MB free hard disk drive space
- Microsoft® Internet Explorer 4.0

Minimum Palm OS Handheld System Requirements

- Palm OS 3.2
- 160 KB free memory

Minimum Plug-in Compatibility

- ACDSee 3.1
- PicaView 2.0

Installing and Uninstalling

You can install from a CD or an executable downloaded from the Internet. The self-extracting installer for ACDSee Mobile for Palm OS® installs the computer software as well as the Palm OS® handheld application (the next time you perform a HotSync® operation, the application is installed).

To install from a CD-ROM:

1. Insert the CD into the CD-ROM drive.
2. Click the Start button and click Run | Browse.
3. Select the CD drive in the Look in drop-down box.
4. Select Setup.exe.
5. Click Open.
6. Click OK to run the installation. Follow the instructions in the Install wizard.

To install from an executable file:

1. Double-click the executable file.
2. Click Next to start the install process. Follow the instructions in the Install wizard.

To uninstall:

1. Click the Start button and click Programs | ACD Systems.
2. Click Uninstall ACDSee Mobile for Palm OS®.
3. Follow the instructions in the Uninstall wizard.

ACDInTouch

ACDInTouch is a data exchange service. When you connect, information is sent to you so that you can read up-to-date information directly in the ACDInTouch pane. This information is relevant to your product, such as upgrades, add-ons, and related software from ACD Systems that may also be of interest to you.

For information on ACD Systems' Privacy Policy, visit our Web site at:
www.ACDSYSTEMS.com/english/company/privacy.htm

The first time you open the stand-alone version of ACDSee Mobile, you are asked to connect to the ACDInTouch service. Follow the instructions provided in the program.

To start ACDInTouch:

If you have ACDSee, please reference the ACDSee help file. Otherwise, click Help | ACDInTouch Service.

Starting ACDSee Mobile for Palm OS®

ACDSee Mobile can run as a stand-alone product (operated independently of other ACD Systems products), or as a plug-in for use with ACD plug-in enabled software.

To start the stand-alone ACDSee Mobile application:

1. Click the Start button and click Programs | ACD Systems.
2. Click ACDSee Mobile for Palm OS®.

To start the plug-in from ACDSee:

1. Select the image or images you want to export in ACDSee.
2. Do one of the following:



- Click the Palm OS® shortcut button.
- Select Plug-ins | Palm OS® (using ACDSee 3.1).
- Select Tools | Activities | Extras, and click Palm OS® (using ACDSee 4.0 or greater).

To start the plug-in from PicaView:

1. Select the image or images you want to export from Windows® Explorer.
2. Right-click the selection and from the shortcut menu select Plug-ins | Palm OS®.

To start ACDSee Mobile from a Palm OS handheld:

1. Tap the Home button.
2. Tap the ACDSee icon.



3

Chapter 3

The Desktop Application

The following chapter identifies and explains the image manipulation and exporting features of the desktop component of ACDSee Mobile.

The User Interface

The ACDSee Mobile desktop application is arranged as follows:



The right side of the window contains a File list to display selected images, their sizes and any associated descriptions. Also included in this area are:

- Add/Remove buttons for adding and removing images from the File list.
- Category controls for specifying which category to export the images to on your Palm OS handheld.
- Destination controls for exporting to multiple Palm OS handhelds or to your computer.
- Settings controls for specifying ACDSee Mobile global settings.

The left side of the window contains tabs and has Previous and Next buttons to scroll through images in the File list. Included in this area is:

- The Original tab, which contains a crop feature and dimensions of the selected image.
- The Preview tab, which displays a dynamic preview of the currently selected image and contains a slider to adjust the dimensions of the image.
- The Description tab, which contains a field for adding text to the current image, as well as activating the Palm OS Privacy feature.



Adjusting Settings

The Settings dialog box contains global parameters for all images in the File list pane.

To open the Settings dialog box:

Click Settings.

Output Device

This option determines the resolution at which each image appears on your Palm OS handheld.

The number of bits used to represent each dot (or pixel) in an image determines how many colors or shades of gray are displayed. A 4-bit image supports 16 colors or grayscales, while a 16-bit image supports 65,536 colors or grayscales.

Default Export Dimensions

This option sizes all images before you export them to your Palm OS handheld.

Fit to Palm	Scales the image size so that it fits within the 160x160 screen
Original Size	Maintains the dimensions of the image

To adjust the scaling factor of individual images:

1. Select the Preview tab.
2. Move the slider to the left or right.

Private Image Settings

This option works in conjunction with the Security (Privacy) feature on your Palm OS handheld. Depending on the Privacy option selected, all images are either masked or completely hidden, with or without a password. Consult your Palm OS handheld for further information regarding the Security feature.

To mark individual images as Private:

1. Select the Description tab.
2. Select Mark all images as private.

Adding and Removing Images

Add, remove and rename images in ACDSee Mobile. Renaming or removing an image does not change the root of that image on your computer; only the copy contained within the plug-in changes.

To add an image, do one of the following:

- Click Add, and in the dialog box that is displayed, select one or more files to add. Click Add.
- Right-click a file in the File list, and in the shortcut menu, select Add. Select one or more files to add and click Add.

To remove an image, do one of the following:

- Select a file and click Remove.
- Right-click a file in the File list, and in the shortcut menu, select Remove.

To rename an image:

1. Right-click a file in the File list, and in the shortcut menu, select Rename.
2. Type a new name.
3. Press Enter.

Exporting Images

ACDSee Mobile converts your images into Palm Database Files (.pdb extension). You can export images directly to your Palm InstallTool or save them to your computer and export them later. Before exporting or saving your images, you can crop, preview or add a description to them.

To export images to your Palm Install tool:

1. Click the Category drop-down arrow.
2. Select a category or Unfiled to determine where the images will be stored on your Palm OS handheld.
3. Click the Destination drop-down arrow.
4. Select the name of your Palm OS handheld.
5. Click OK.

If you have a Palm OS handheld that uses Memory Sticks or Secure Digital cards, you can export images directly to the card. A button becomes available when you select the device in the Destination field.



Exports images to the Palm OS handheld



Exports images to the Secure Digital card



Exports to the Memory Stick

Exporting to the Palm Install tool queues the file or files until your next HotSync® operation. If you do not want a file to be placed on your Palm OS handheld, they can be deleted from the Palm InstallTool.

To add a category:

1. Click the Plus (+) button.
2. Type a category name.
3. Click OK.

To remove a category:

1. Click the Category drop-down arrow.
2. Select a category and click the Minus (-) button.

Note:

The Palm OS only supports a maximum of 15 categories. Once these are present on the system, the next HotSync places images in the Unfiled category regardless of which category you specify. To remove a category, delete all the images in that category or transfer the images to another category.

To delete files from the Palm Install tool:

1. Click the Start button and click Programs | Palm Desktop | Install Tool.
2. Select the file or files you want to remove.
3. Click Remove.

To save the .pdb images to your computer:

1. In the Destination list, select Directory.
2. Click OK.
3. In the dialog box, select the location where you want to save your images.
4. Click OK.

Converted images can be exported to your Palm OS handheld at a later time by using the Palm Install tool.

Previewing and Resizing Images

A full-color preview displays the currently selected image, and is updated as the settings are changed.

To preview an image:

1. Select an image in the File list.
2. Select the Preview tab.

To change the size of the exported image:

1. Select an image in the File list.
2. Select the Preview tab.
3. Move the slider between Fit to Palm and Original size. Fit to Palm resizes the image to 160x160; the same dimensions as the Palm OS handheld display area.

Note:

If you want to export all images in the File list as the same size, click Settings and select either Fit to Palm or Original Size.

To change the currently displayed image:

Click the Previous or Next buttons at the bottom of the dialog box.


Cropping Images

From the Original tabbed page, you can modify an image with the crop options. Select from the following items to view details on how to crop your images.


To crop an image:

1. Select an image in the File list.
2. Click the Crop button.
3. Click in the image and draw a crop window.

To adjust the crop size:

-  1. Hold the mouse pointer over the crop outline until the mouse pointer changes to a Two Sided arrow .
2. Click and resize the crop outline.

To move the crop:

-  1. Place the mouse pointer in the center of the cropped area until the mouse pointer changes to a Four Sided arrow.
2. Click and move the crop to a new position.

To square the crop outline:

After you add a crop to your image, click Square Selection.

The Square selection feature squares the dimensions of the cropped area. When you select this option, the image fills the entire display area of the Palm OS handheld. If an image is not squared, there is black space around it in order to preserve the original aspect ratio.

To change the currently displayed image:

Click the Previous or Next buttons at the bottom of the dialog box.

Adding Descriptions

Descriptions can be used to customize and categorize images. Descriptions added to images using ACDSee are included when the image is added to ACDSee Mobile.

To add a description:

1. Select an image.
2. Select the Description tab.
3. Type a description in the text box.

The description is added to a column in the File list.

To change a description:

1. Right-click an image.
2. In the shortcut menu, select Change Description.
3. Type a new description.

4

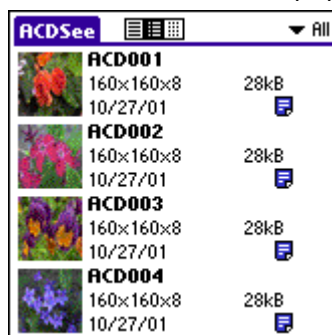
Chapter 4

The Palm OS® Application

This chapter identifies and explains the viewing, image properties and settings features of the Palm OS® handheld component of ACDSee Mobile.

The User Interface

The ACDSee Mobile desktop application is arranged as follows:



The Browser



The Viewer



The Image Properties dialog box

Menu Commands

The following describes the ACDSee Mobile menu commands for the Palm OS handheld.

To access ACDSee menu commands from the Browser:

1. From the Browser, tap ACDSee | File.
2. Select from the available Browser menu options.

Browser File Menu Options

Delete Images	Opens a dialog box where you can select one or more images to delete.
Copy Images	Opens a dialog box where you can copy selected images to a specified destination, such as a card, or to your Palm OS handheld.
Move Images	Opens a dialog box where you can move selected images to a specified destination, such as a card, or to your Palm OS handheld.
Beam Category	Beams all images in the currently viewed category to another Palm OS handheld.
Browser Settings	Opens a dialog box where you can select the default view (list, details or thumbnails) that is displayed when ACDSee is opened, as well as a default sort order (by name, size, date, or number of colors) when viewing images. <ul style="list-style-type: none">• Default view: Specifies the view mode displayed when ACDSee Mobile is opened (list, details or thumbnails).• Sort by: Sorts images by name, size, date, or number of colors.• Sort order: Specifies an ascending or descending sort order.
Slide Show Settings	Opens a dialog box where you can select from the following options: <ul style="list-style-type: none">• Advance image: Specifies either manual or time delayed image advancement.• Loop slide show: Restarts the slide show once the last slide is displayed.• Launch on startup: Starts a slide show of the current category when ACDSee Mobile is started.• Stay on in slide show: Prevents the Palm OS handheld from powering off during a slide show.
Start Slide Show	Starts a slide show of the images in the currently displayed category according to the settings defined by the Slide Show options.
Image Settings	Opens a dialog box where you can select from the following options: <ul style="list-style-type: none">• Large image: Defines the display size of images larger than 160x160.• Navigation icons: Hides or displays the navigation icons in the Viewer.• Image description: Hides or displays the image description.
Help	Opens the help file.
Licensing Information	Displays the end user license agreement.
About ACDSee	Opens a dialog box containing the software version number and corporate Web site information.

To access ACDSee menu commands from the Viewer:

1. From the Viewer, tap the Menu button.
2. Select from the available Viewer menu options.

Viewer Image Menu Options

Beam	Beams the currently viewed image to another Palm OS handheld
Details	Displays properties for the currently viewed image
Next	Views the next image in sequence in the category
Previous	Views the previous image in sequence in the category
Return to Browser	Returns you to the Browser
Delete	Deletes the image

Viewer View Menu Options


Fit to Screen	Displays the entire image in the Viewer
One to One	Displays the image as its actual size in the Viewer

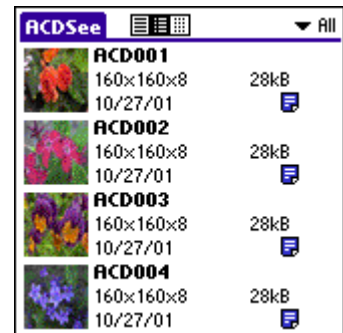
Viewing Images

ACDSee Mobile opens up in the Browser. You can toggle through the Browser views. Tap the applicable icon at the top of the Browser. Choose between the following view modes:

- List
- Details
- Thumbnails

To toggle through the Browser views:

 Tap the applicable icon at the top of the Browser.




Images are categorized before being exported from your PC. To change the category you are browsing, please see Categorizing Images.

To select an image for display in the Viewer, tap one of the following:

- Image file name
- Thumbnail
- File information in the Browser

To return to the Browser from the Viewer, do one of the following:

-  Tap the Home icon.
- Tap the Menu button, and select Image | Return to Browser.

Memory Sticks, Secure Digital and Compact Flash Cards

If you have a Memory Stick, SD or Compact Flash card installed, you can browse and view images on either the card or your Palm OS handheld.

To switch between the Palm OS handheld and a card:

1. Tap the Category drop-down arrow located in the upper-right corner of the Browser.
2. Do one of the following:
 - Tap the name of your Palm OS handheld to view images on that device.
 - Tap the name of your Memory Stick, SD or Compact Flash card to view images on the card.

Setting Image Properties

The Image Properties dialog box contains specific file information as well as options for adding notes and password protection (the Privacy feature).

To view image properties:

1. Select an image in the Browser.
2. Tap the Information icon.

If you have your navigation icons disabled, tap the lower-left corner of the Viewer. The Image Properties dialog box includes information such as image dimensions, colors, file size, creation date, category used, password protection and any notes associated with the image.



To close the Image Properties dialog box:

Tap OK.

To add notes to an image:

1. Select an image in the Browser.
2. Tap the Information icon.
3. Tap the Note button.
4. Type or write freely in the Graffiti® writing area.
5. Tap OK.

To add Privacy to an image:

1. Select an image in the Browser.
2. Tap the Information icon.
3. Select Private.
4. Tap OK.

The image is grayed-out in the Browser and you are prompted for the password when the image is selected.

Note:

Privacy is only available if you activate the Palm OS handheld (OS 3.5 or greater) Mask Records or Hide Records options in the security feature. You must assign a password to enable this option.

Categorizing Images

Images are categorized before being exported from your PC, but can be changed once the image resides on your Palm OS handheld. If you have an SD or Compact Flash card installed, you can transfer images between the card and your Palm OS handheld.

To change category views in the Browser:

1. Tap the Category drop-down arrow in the upper-right corner of the Browser.
2. If you have an SD or Compact Flash card installed, select the device to add the category to and select Category again. If you don't have a card installed, skip this step.
3. Select All, Unfiled or a customized category.

To add new categories on your Palm OS handheld:

1. Tap the Category drop-down arrow located in the upper-right corner of the Browser.
2. If you have an SD or Compact Flash card installed, select the device to add the category to and select Category again. If you don't have a card installed, skip this step.
3. Select Edit Categories.
4. Tap the New button. You can also select and rename, or delete an existing category name.
5. Type a new name and tap OK.
6. Tap OK to exit the Edit Categories dialog box.

To place an image into another category:

1. Select an image in the Browser.
2. Tap the Information icon.
3. Tap the Category drop-down arrow.
4. Select a category.
5. Tap OK.

To move an image between the Palm OS handheld and an SD or Compact Flash card:

1. In the Browser, display the category containing the image or images you want to move.
2. Tap ACDSsee | File | Move Images.
3. In the Move Images dialog box, do one of the following:
 - Select the image to move and tap Move.
 - Tap Move All to move all images.
4. Tap Done.

To copy an image between the Palm OS handheld and an SD or Compact Flash card:

1. In the Browser, display the category containing the image or images you want to move.
2. Tap ACDSsee | File | Copy Images.
3. In the Move Images dialog box, do one of the following:
 - Select the image to copy and tap Copy.
 - Tap Copy All to copy all images.
4. Tap Done.

Beaming Images

You can beam images to other ACDSsee Mobile for Palm OS users.

To beam an image:

1. Select an image in the Browser.
2. Tap the Menu button.
3. Select Image | Beam.

To beam an entire category of images.

1. Open a category in the Browser.
2. Select ACDSsee | File | Beam Category.

Running Slide Shows

The slide show feature cycles through all of your images in the current category (depending on your Slide Show settings). You can also advance slides by dragging the stylus in a horizontal line in the Graffiti® writing area (in either direction).

To run a slide show:

Tap ACDSsee | File | Start Slide Show.

To stop a slide show:

Tap the upper-left corner of the screen.

Appendix 1: Compatible Palm OS® Devices

Palm Devices	Resolution (in bits)
Palm III handheld	4
Palm IIIc handheld	8
Palm IIIx handheld	4
Palm IIIe handheld	4
Palm IIIxe handheld	4
Palm V handheld	4
Palm Vx handheld	4
Palm VII handheld	4
Palm VIIx handheld	4
Palm m100 handheld	4
Palm m105 handheld	4
Palm m125 handheld	4
Palm m500 handheld	4
Palm m505 handheld	16
Claudia Schiffer handheld	4
Epocrates Healthcare handheld	4
Handspring® Visor™ Platinum	4
Handspring® Visor™ Prism	16
Handspring® Visor™ Edge	4
HealthTech handheld	4
IBM® WorkPad™ original	4
IBM® WorkPad™	4
IBM® WorkPad™ c3	4
TRG® TRGpro™	4
Clié™ PEG-N760C	16
Clié™ PEG-N710C	16
Clié™ PEG-N610C	16
Clié™ PEG-T615C	16
Clié™ PEG-T415	4
Clié™ PEG-S360	4
Clié™ PEG-S320	4

Appendix 2: Supported Image Formats

ACDSee Mobile supports the following image formats:

Read Support

BMP	Windows Bitmap	Windows and OS/2; 2/8/16/24/32 bpp; RLE and uncompressed
EMF	Enhanced Metafile Format	Win32 enhanced placeable metafiles
GIF	Graphics Interchange Format	Single page and animated; 87a and 89a
JPEG	Joint Photography Experts Group	JFIF and Adobe(tm) CMYK
PCX	ZSoft Publisher's Paintbrush	All sub-types supported
PIC	SoftImage PIC	All sub-types supported
PNG	Portable Network Graphics	All sub-types supported
TGA	TargaTGA	All sub-types supported
TIFF	Tag Image File Format	1/2/4/12/16 bits per sample, 1-4 samples per pixel Bilevel/RGB/Paletted/SMYK/YCrCb/LOGL/LOGLUV; Uncompressed/PackBits/LZW/ThunderScan/SGILog/CCITT/ZIP/NEXT/New-JPEG (no v6.0 JPEG support) Support for multi-page documents
WMF	Windows Metafile Format	Win 3.x placeable metafiles

Support for further image formats can be added by installing PicaView or ACDSee. For more information, visit our Web site at:

www.ACDSYSTEMS.com/English/Products/index.htm

Appendix 3: Contacting ACD Systems

Contact us by mail at:

North America

ACD Systems Inc.
2201 North Collins, Suite #100
Arlington, TX 76011, USA

International

ACD Systems Ltd.
PO Box 36
Saanichton, BC
V8M 2C3, Canada

Technical Support

By purchasing this product, you receive ongoing, preferred treatment by our technical support team, should the need arise. If you have any technical related questions or general feedback, please visit our Web site at: www.acdsystems.com/English/Support/

Telephone us for technical support at: 1 (250) 544-6701. Our office hours are Monday to Friday, 7:00 A.M. to 5:00 P.M. PST. During U.S. and Canadian statutory holidays, our hours of support are 8:00 A.M. to 4:00 P.M. PST.

Telephone calls for Technical Support are subject to international rates if calling from outside of Canada, and/or long distance charges if calling from within Canada.

Feedback

Your feedback is important to us. Many features and portions of the interface continue to be influenced by comments from users. So, if you have a grand idea for a new feature, or a better way of doing something, please drop us a note.

Contact us Monday to Friday, 7:00 A.M. to 5:00 P.M. PST. During U.S. and Canadian statutory holidays, our hours of support are 8:00 A.M. to 4:00 P.M. PST.

E-mail: ideas@acdsystems.com
Telephone: 1 (250) 544-6700

This e-mail address is not intended for technical support questions; technical related questions will not receive a reply.

Index

- ACDInTouch 5
- adding images 8
- beaming images 18
- Browser 15
- card support
 - Compact Flash 15
 - Memory Stick 15
 - Secure Digital 15
- categories
 - adding 10
 - removing 10
- categorizing images 9, 17
- commands, menu 13
- Compact Flash 15
- contacting ACD Systems 21
- cropping 11
 - adjusting crop size 11
 - moving crop 11
 - squaring crop 11
- descriptions, adding 11
- devices 19
- dimensions, export 8
- exporting images 9
- image formats 20
- images
 - adding 8
 - beaming 18
 - browsing 15
 - categorizing 9, 17
 - cropping 11
 - deleting 10
 - descriptions, adding 11
 - exporting 9
 - previewing 10
 - removing 8
 - renaming 8
 - resizing 10
 - saving 10
 - viewing 15
- installing 5
- Memory Stick 15
- menu commands 13
- notes 16
- Palm Install tool 10
- Palm OS handheld, starting 6
- password protection 17
- plug-in, starting 6
- previewing images 10
- properties 16
- removing images 8
- resizing images 10
- scaling 8
- Secure Digital 15
- settings
 - desktop application 8
 - image properties 16
 - privacy 8, 16
- slide shows 18
- stand-alone, starting 6
- starting
 - desktop application 6
 - Palm OS handheld application 6
 - PicaView 6
 - plug-in 6
 - stand-alone 6
- system requirements 4
- technical support 21
- uninstalling 5
- user interface
 - desktop application 7
 - Palm OS application 13
- Viewer 15
- viewing images 15