

User Guide

(Updated 2001)



© ACD Systems Ltd. 2001, 2000 All rights reserved.

Table of Contents

ACD Systems at the Hub of Digital Imaging	6
Introduction	7
Features of ACDZip	7
Archive Manager	7
Windows Explorer Shortcut Menu Integration	7
Self-extracting Archives	8
Security	8
What is an Archive?	8
Installing ACDZip	8
Minimum system requirements:	9
Uninstalling ACDZip	9
Starting ACDZip	9
Using Help Tools	9
Toolbar Buttons	10
Navigation pane	10
Context-sensitive Help (What's This?)	10
Using the ACDZip PDF Document	10
Paging Through a Document	10
Browsing with Bookmarks	11
Following Links	11
Retracing your Steps	11
Finding Words	11
Changing the Page Layout	12
Main Window	13
ACDZip User Interface	13
Menu Bar	14
Toolbar	14
Folder Tree	14
File List	14
Status Bar	15
Add Window	15
Simple Mode	15
Advanced Mode	15
Toolbar	15
Extract Files Dialog Box	16
Path Box	16
Extract	16
Options	16
New Folder	17
The Viewer	17
File menu	18
View menu	18

Help	18
Customizing Toolbars	18
Chevrons	19
Labels	19
Using ACDZip	20
Toolbars	21
Main Window Toolbar Buttons	21
Add Window Toolbar Buttons	22
Creating an Archive	23
Creating an Archive in Windows Explorer	23
Adding Files/Folders to an Archive	24
Simple Add Window	24
Advanced Add window	25
Creating Folders in an Archive	26
Finding Files in an Archive	26
Viewing Images in an Archive	27
Opening Files in an Archive	27
Modifying and Saving Files Located in an Archive	27
Converting an Archive	28
Extracting Files from an Archive	29
E-mail an Archive	30
Creating a Self-extracting Archive	30
Preferences	31
Opening a Self-extracting Archive	32
Options and Plug-in Settings	32
General Options	33
File/folder list	33
Archives	34
Toolbar	34
Default Archive Type	35
Viewer	35
File Associations Options	35
Windows Options	36
Cascading Menu Items	36
Archive Files	37
All Files/Folders	37
Self-Extracting Archives	37
Enable tool tip extension	37
Allow files to be dropped on archive files	37
Images Options	37
Thumbnail size	38
Border Size	38
Viewer	38

Archive types and Compression Settings	38
Plug-in Settings	39
ACE Archive	40
ARJ Archive	40
Cabinet Archives (CAB)	40
Adjusting Settings	41
Disk Spanning	41
Compression Methods	41
GZIP Archive	42
LHA Archive	42
LZW Archive	42
MIMArchive	42
RAR Archive	42
Susie Archive	43
TAR Archive	43
TGZ Archive	43
UUE Archive	43
UUE Settings	43
ZIP Archive	44
Strong Encryption Format (SEF)	44
Creating a Strong Encryption Format Archive	44
SEF Archive Settings	45
Converting to a Strong Encryption Format Archive	45
Entering Passwords	45
Using Appropriate Passwords	45
Appendix 1: Keyboard Shortcuts	46
Keyboard Shortcuts	46
Appendix 2: Archive and Image Format Support	48
Archive Format Support	48
Image Formats	49
Appendix 3: Contacting ACD Systems	50
ACDInTouch Service	50
Contacting ACD Systems	50

ACD Systems at the Hub of Digital Imaging

Based in Victoria, British Columbia, Canada, ACD Systems designs, develops and markets digital imaging and corporate communications software that meets the needs of home and professional users. Over 24 million consumers and more than 33,000 corporate clients use our flagship product ACDSee™. To serve our global customers well, our web content is available in 12 languages along with many of our products for PC and Macintosh®.

ACD Systems continues to capitalize on the explosive growth in the use of digital images via cameras, scanners, PDAs and the Internet. We have strong strategic alliances with value added resellers (VARs), original equipment manufacturers (OEMs), retailers, software publishers and distributors throughout North America and worldwide. Plus, our unique platform model and Software Development Kit (SDK) is available to third-party companies to develop their own imaging solutions that can be integrated with our software.

Introduction

ACDZip is an archive and encryption program designed to quickly and easily manage your files and folders. With ACDZip's user interface, similar to Windows® Explorer™, you can select a file from any file list, drag it to ACDZip and add it to an archive. You can display a preview of image files located within an archive, or create a self-extracting executable to make program installation simple for the individual receiving the archived files. There is support for 10 different file types, including Strong Encryption Format (SEF), an ACD Systems proprietary encryption format based upon the Twofish algorithm.

Features of ACDZip

ACDZip 1.0 includes the following features:

Archive Manager

- Displays a familiar Windows® style interface with five different file view styles
- Provides seamless support for 10 archive formats
- Creates self-extracting archives, with display options that provide a unique file execution
- Creates easy to move folders within the file tree of an archive
- Displays image thumbnails in the file list and images in the Viewer
- Provides file sorting, renaming and deleting functionality within an archive
- Copies, imports or exports files to and from an archive
- Associates supported file formats with ACDZip at the user's request

Windows Explorer Shortcut Menu Integration

- * Creates an archive of selected items directly from the menu
- Extracts files to either a temporary folder or user defined folder
- Converts existing archives to another format

Self-extracting Archives

- Creates customizable execution dialogs, including company name, an image and a message
- Adds personalized Web addresses to the execution window

Security

- Provides 256-bit encryption in the form of a Strong Encryption File (.sef) file
- Provides password protection for .zip and .sef files
- Extracts files from password protected .rar files

What is an Archive?

An archive is a collection of computer files packaged together for the purpose of backing up files, easy transfer to another location, or for reducing the space used on the hard disk drive. An archive can include a simple list of files or a complex structure of folders and files organized in a directory.

A number of archive formats are used primarily with the UNIX-based operating system. On main-frame operating systems, procedures for archiving or backing up files are often automated as a daily operation.

An archive on a Web site refers to a collection of individual publications of similar content or chronology that are cataloged or listed on the site. Many Web sites, with daily changes to information, often refer to this information as an archive.

When you request a file from a Web site, the downloaded file is often referred to as an archive (commonly with the .zip extension) or a self-extracting archive (an .exe file).

Installing ACDZip

You can install ACDZip from a CD or from a downloaded executable file. Before beginning the install process, close all Windows applications on your desktop. This will help prevent conflicts during installation.

To Install ACDZip from a downloaded .exe file:

1. Double-click the file.
2. Follow the install wizard's instructions to complete the installation.

To install ACDZip from a CD:

1. Place your CD into your CD-ROM drive. If your system is configured to automatically run an installation, go to step.
2. Double-click the My Computer icon on your desktop.
3. Double-click the CD-ROM drive.
4. Double-click the setup.exe file.

5. Follow the install wizard's instructions to complete the installation.

Minimum system requirements:

- Microsoft® Windows 95/98/Me/NT 4.0/2000/XP
- Pentium class processor with 32 MB RAM
- 10 MB free disk space
- Microsoft Internet Explorer™ 4.01 or higher

Note:

Users working with large archives will benefit from system requirements that exceed those listed above. This will ensure faster archive compression and extraction.

Uninstalling ACDZip

You can remove ACDZip from your system as follows:

1. Open the Windows Control Panel.
2. Double-click Add/Remove Programs.
3. Find ACDZip in the list, and double-click it.
4. Follow the instructions in the Uninstall Wizard.

Starting ACDZip

ACDZip can be started from the desktop icon, the Start menu, or a shortcut list.

To Start ACDZip do one of the following:

- Double-click the ACDZip icon on the desktop.
- Double-click an associated archive.
- On the Start menu, click Programs | ACDSYSTEMS and click ACDZip. This is the default install location.
- Right-click an archive or selection of files in the file list of Windows Explorer or an Open/Save dialog box. From the shortcut menu, click Open with ACDZip or Create Archive.

Using Help Tools

ACDZip provides HTML Help to assist you in accomplishing the tasks you desire.

To access the help file, do one of the following:

- Press the F1 key.
- Click the Help button on the toolbar.
- Click Help | Contents.

Toolbar Buttons

Hide/Show	Click the button to close or open the left tabs of the help file window.
Back/Forward	Click the buttons to navigate to a topic that you have previously viewed.
Print	Click the button to send a copy of the topic you are viewing in the right pane to your default printer.
ACD Systems	Click the ACD Systems button to go to ACD's Web site at: www.ACDSYSTEMS.com .

Navigation Pane

Contents	Double-click a book to display its sub-books and pages, or double-click a page to view its information in the right pane.
Index	Type in keywords or phrases to find topics associated with these terms. To view the topic, select the keyword, and click Display.
Search	Type the words you want to search for and click List Topics to find topics containing these words. When you want to view a topic, select it and click Display.
Favorites	When a frequently used topic is displayed in the right pane, click Add. To view a topic from the list of your favorite topics, select it and click Display.

Context-sensitive Help (What's This?)

With certain application windows, you have the option of clicking the button located in the upper-right corner of the window.

When the mouse pointer changes into the [What's this?] pointer, click a field to access a brief explanation.

You can also access the same information by clicking a field with the right mouse button. However, this method does not work with text boxes.

Using the ACDZip PDF Document

Here are some tips to help you quickly maneuver through this PDF document.

Paging Through a Document

Adobe Acrobat Reader contains toolbar buttons to help you move through the PDF document.



Click to open the first page.



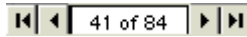
Click to open the last page.



Click to open the previous page.



Click to go to the next sequential page.




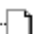
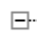



These buttons are also present on the status bar located at the bottom of the document. To view a specific page number, type a new number in the field.

Note:

Click the Document option to view other available shortcuts.


Browsing with Bookmarks

Bookmarks show the hierarchy in a document and provide easy access to individual pages. They can be subordinate to other bookmarks.


  Getting Started	Click a bookmark to View teh Page. A Plus sign(+) to the left of the book mark indicates there are bookmarks beneath it. Click the Plus sign to view the subordinate bookmarks.
  Browse Mode	
  The Browse Window	


Following Links

When you click a link, another part in the document is displayed, a location on the World Wide Web is opened in your Internet browser, or an e-mail application is opened for you to send an e-mail to that address. Links are displayed in blue, bold text.

 To follow a link, position your pointer over the linked area until it changes to a pointed hand, or a pointed hand with a 'W' for Web sites and e-mail addresses; then click the link.


Retracing your Steps

 Click to retrace the path of previously viewed pages.

 Click to go forward in the path of viewed pages.

Finding Words

When you want to find a word or phrase quickly, you can use the Find command to search your entire document at once.

 Click to open the Find dialog box. Type the word or phrase you are looking for and select from one of the following three options:

- | | |
|-----------------------|--|
| Match Whole Word Only | Finds occurrences of the phrase you are searching for |
| Match Case | Finds the words or phrases with the exact capitalization entered in the Find What box |
| Find Backwards | Starts the search in the current page and goes backwards through the document from there |

To find the next occurrence of the word or phrase, click the Find button and then click Find Again.

Changing the Page Layout

Select from the three layouts available for viewing:



Image Actual Size



Image Fit in Window



Image Fit Width

2

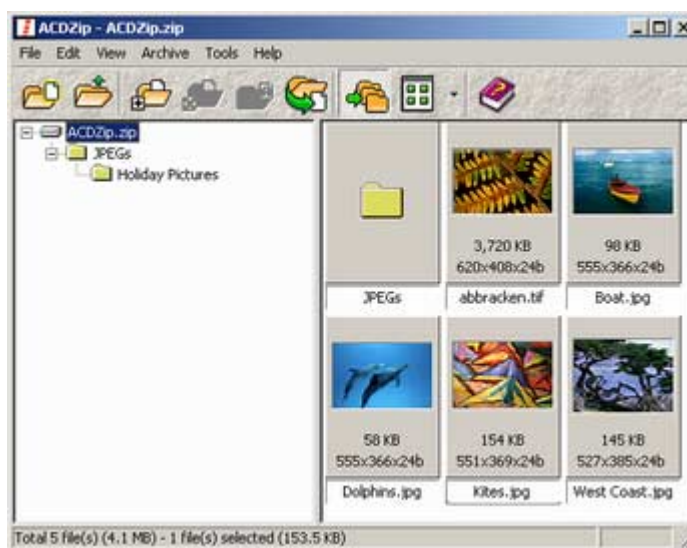
Chapter 2

ACDZip User Interface

ACDZip's user interface contains four windows: the main ACDZip window, the Add window, the Extract Files dialog box and the Viewer. There are shortcut buttons for frequently used tasks and you can customize the toolbars. View thumbnail previews of images in an organized file list and individual images at full resolution in the Viewer.

Main Window

The main ACDZip window is designed with familiar layout: a menu bar, toolbar, folder tree, file list and status bar. Many of the tasks you do in other programs are available in the main window. This includes such functionality as, dragging files, copying and pasting, and creating new folders.



The main window is comprised of five distinct areas.

Menu Bar

The menu bar includes drop-down lists of commands for the creation, manipulation, conversion, and extraction of archives. A complete description of all the commands is documented throughout the user guide.

Toolbar

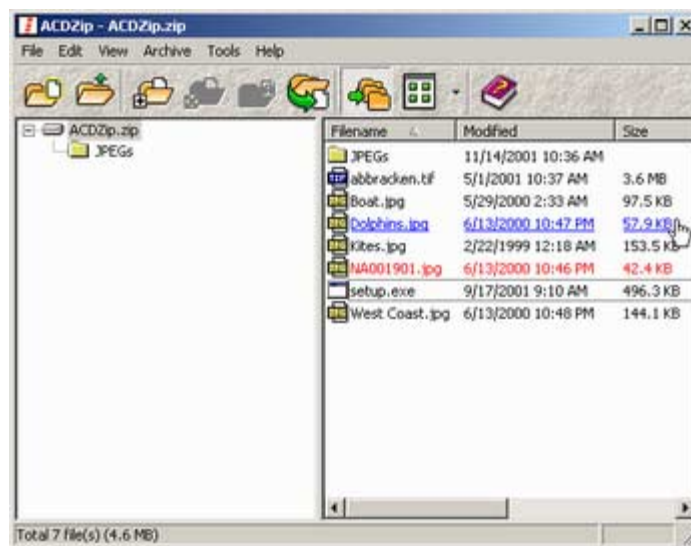
The toolbar is a customizable area with shortcut buttons to common tasks.

Folder Tree

The folder tree displays the root archive name and any folders that are contained below it in the tree. Clicking on the Plus sign of a subfolder opens it and displays the contents in the file list.

File List

The file list area displays all the files and folders that are contained in a folder. The folder, with its contents displayed, is opened in the folder tree.



The files in the list are displayed in three possible ways:

- **Hot tracking** of files, which underlines the selected file and any displayed rows with a blue line and changes the background to blue
- **Red highlighting** indicating the files are password protected
- Normal text

Note:

CRC is a Cyclic Redundancy Check. It's a value generated from the data in the file to verify correctness. When a file is extracted, a CRC is computed and compared to the CRC in the table to make sure the file was extracted correctly. Power users may compute their own CRCs and

compare them, or more likely, compare two of the same file in different archives and make sure their CRCs are the same.

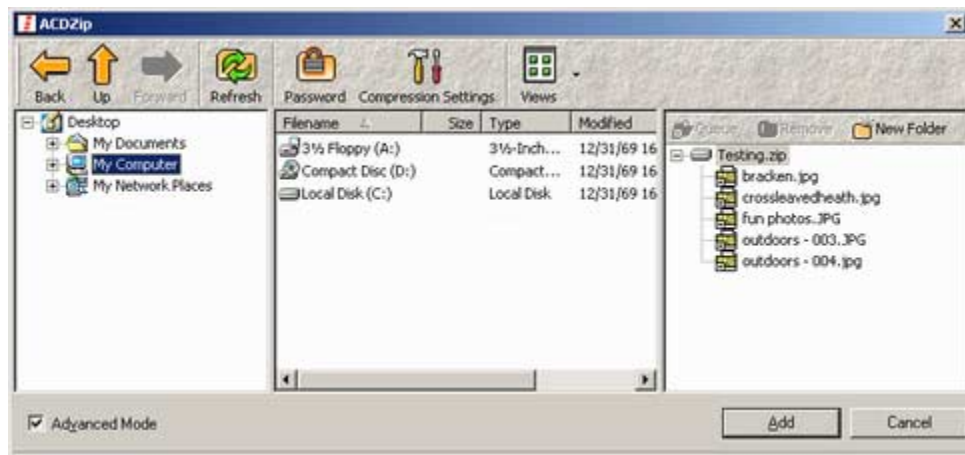
Status Bar

The status bar at the bottom of the screen provides the following information:

- The number and total size of the file in a folder
- The number and size of selected files in the file list

Add Window

The Add window is designed with the familiar layout of a folder tree and a file list. There are two different modes for the Add window, simple and advanced.



Simple Mode

When the Add window is used in simple mode it includes a folder tree, on the left, and a file list on the right. Files and folders are added to the archive one at a time or as a selection. The window must be opened a second time to add further items to the archive.

Advanced Mode

When the Add window is used in advanced mode, a third pane is added to the window called the queue. The queue displays the current archive structure. New Folders can be created in the queue and files and folders added to them. The queue accepts items dragged from Windows Explorer or your desktop also. Once all files and folders are in the queue, you can click Add to place them in the archive. This eliminates the need to move back and forth between the main ACDZip window and the Add window.

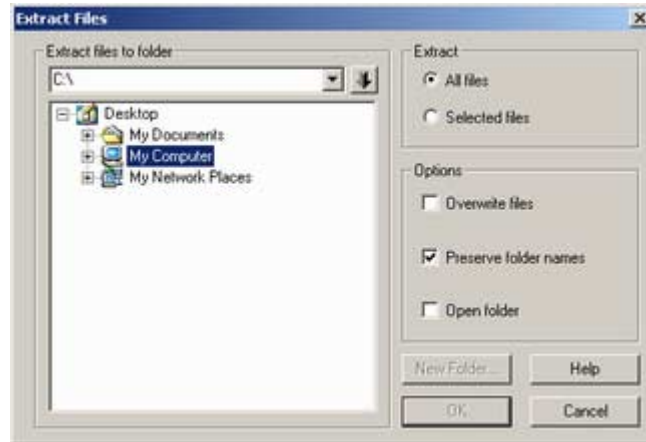
Toolbar

The Add window toolbar is common to both the Simple mode and Advanced mode. It includes the

following buttons; folder navigation buttons, window refresh, archive password and compression settings, and file list views.

Extract Files Dialog Box

The Extract Files dialog box displays options that you can use to specify how files and folders are extracted from the archive.



Path Box

The path box displays a path that is typed in, copied to, or selected from the folder tree. If a path is typed or copied into the path box and the down arrow button is pressed, ACDZip automatically displays the folder in the folder tree.

Extract

There are two options for extraction: All files and Selected files.

- | | |
|----------------|---|
| All files | The entire archive is extracted to the location specified in the path box. |
| Selected files | Any files or folders highlighted are extracted to the location specified in the path box. If the archive name is highlighted in the folder tree all files are extracted. If no files or folders are selected, there is no extraction. |

Options

These options control how ACDZip handles the folders and files in an archive when they are extracted.

- | | |
|---------------------------|---|
| Overwrite files | When this option is selected any files already in existence with the same file name are copied over by the new file from the archive. If the option is not selected, a confirmation message appears to confirm copying over the file. |
| Preserve folder structure | Ensures that existing subfolder structure is not changed in the destination folder when the files/folders are extracted. |
| Open folder | Once you extract files from an archive, the folder where the files are located is opened on your desktop. |

New Folder

The New Folder button adds a subfolder to the selected folder in the folder tree. Typing the new folder name into a path creates the folder automatically when the files are extracted from the archive.

The Viewer

The Viewer in ACDZip displays supported image files in a separate window from the Main window. Once you have an image in the viewer, you may select from a number of menu options.



To view an image:

1. Select an image file.
2. Do one of the following:
 - Right-click the file and select View as Image.
 - Click Tools | View File | View as Image.
 - Double-click the file.
 - Press Enter.

File menu

Copy	Places a copy of the file on the Clipboard. This copy can then be used in another application or transferred to another directory.
Save As	Opens the Save As dialog box to save a copy of the displayed image under another name or in another directory.
Close	Closes the image Viewer

View menu

- Zoom** Magnify an image using the following commands:
- Zoom out - Reduces the image size.
 - Zoom in - Enlarges the image size.
 - 100% - Displays the image at its normal size.
 - Fit to screen - Displays the image at its largest size to fit within the dimensions of the display area, while maintaining the image's aspect ratio.
- Full-screen** Displays the image on the screen as the only visible item. The image's aspect ratio and any zone qualities are maintained. The image's edges may be outside the viewable area.
- Page** Browse a multi-page image by selecting the following commands:
- Previous - returns to the previous image in the sequence.
 - Next - advances to the next image in the sequence.
 - First - returns to the beginning of the image sequence.
 - Last - advances to the end of the image sequence.

Help

- Contents** Opens the Help file.

Customizing Toolbars

In a toolbar, you can choose which toolbar buttons you want displayed. The main ACDZip window and the Add window have customizable tool bars.

To add or remove a toolbar button:

1. Right-click anywhere on the toolbar and select Customize.
2. Select an icon and click Add or Remove.
3. Click Move Up or Move Down to position the icon.
4. Click Close.

To rearrange buttons in the toolbar:

Press and hold the Alt key and do one of the following:

- Drag a button to a new position to move it.
- Drag a button off of the toolbar to remove it.

To add or remove a separator in the toolbar:

Press and hold the Alt key and do one of the following:

- Drag a button slightly to the right to add a separator.
- Drag a button over top of a separator to remove it.

Chevrons

When there are too many icons for the viewable area of the toolbar, a button appears at the right side of the toolbar called a chevron. Click the chevron to expand the toolbar.

Labels

You can turn the button labels on or off, or display the text to the right of or below each button.

To change the display of the button labels:

1. Right-click anywhere on the toolbar.
2. Select Button Labels and from the drop-down menu, choose from the following options:
 - No Labels
 - Labels on Right
 - Selective Labels on Right
 - Labels Below

3

Chapter 3

Using ACDZip

ACDZip lets you control a number of different aspects of an archive. You can create an archive from files on your computer or extract files from an archive you have received or stored. You can convert an archive to another format for ease of storage, or create a self-extracting archive to distribute to other people. Once an archive is created you can e-mail it directly from ACDZip.

The main ACDZip window displays the archive structure and the current file and folder contents. The archive is dynamic; items dropped on to the display are automatically added to the archive, and saved when it is closed. The Add window provides simple or advanced addition of items to an archive.

Extracting files from an archive is as important as archive creation. Items can be opened in the archive, allowing you to preview full-sized images or read documents prior to extracting them. A self-extracting archive can be configured to automatically open a specific file after extracting.

Archives with a complex structure can often make it difficult to locate a particular file or folder. With ACDZip you can locate files or folders with a specific name or files of a particular type.

Toolbars

Toolbars are an easy way to access common tasks in the main ACDZip window or in the Add window. You can customize the toolbar of each window to display the tasks you primarily use.










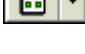













Main Window Toolbar Buttons









The main window toolbar can be customized with the following buttons:



New Archive








Opens a dialog box and asks you to type a file name and select an archive type.

	Open Archive	Opens a dialog for you to browse to an existing archive. Recently created archives are also shown in the File menu.
	Close Archive	Closes and saves the archive.
	Add Files	Opens the Add Window where you can select the files and folders to be put in the archive.
	Delete	Deletes selected files or folders.
	Rename	Displays a text edit box in the file list for renaming files and folders.
	Extract	Opens the Extract File Window where you can select which files and folders to extract and where to put them.
	Show Folder	Hides or shows the folder tree.
	Views	Provides you with five display options for the file list.
	Large Icons:	Displays a large file icon and its file name.
	Small Icons:	Displays a small file icon and its file name.
	List:	Displays a small icon and its file name.
	Details:	Displays a small icon, file name, modification date, file path in the archive, size, compression ratio, packed file size, type of file and CRC.
	Thumbnails:	Displays a thumbnail image of either the icon or the image, the image size and dimensions and the file name.
	Back	Returns you to the previously viewed folder and displays the files in the file list.
	Up one level	Returns you to the parent folder of the selected folder and displays the files in the file list.
	Forward	Forwards you to a previously viewed folder and displays the files in the file list.
	Refresh	Returns you to the root folder of the archive and updates the file lists of all the subfolders.
	Create Folder	Creates an unnamed folder in the selected directory.
	Cut	Removes the file or folder from the archive and places a copy on the clip board.
	Copy	Places a copy of the file/folder on the clipboard. The file can be pasted to another folder in the archive or to the file list of another application.
	Paste	Inserts the file/folder contents of the clipboard in to the designated folder in the archive. The paste preserves the subfolder structure of the folders

	Find	copied. Searches an archive for specific files. If you only know a small portion of the file name, ACDZip finds all files with the specified text.
	Create SFX	Opens the Create Self-extracting Archive dialog box.
	Convert	Changes the file format of the archive.
	Options	Opens the Options dialog box.
	E-mail	Opens a new message window of your default e-mail program and attaches a copy of the archive.
	Install	Executes the setup program, (if the archive contains a setup.exe).
	ACDInTouch	Opens the ACDInTouch dialog box, connects to the ACD Systems Web site and downloads any new messages.
	Help	Opens the ACDZip Help file to the Welcome page.

Add Window Toolbar Buttons

The Add window toolbar can be customized with the following buttons:

	Back	Returns you to the previously viewed folder and displays its files in the file list.
	Up one level	Returns you to the parent folder of the selected folder and displays the files in the file list.
	Forward	Forwards you to a previously viewed folder and displays the files in the file list. The Back button must be clicked prior to this being available.
	Refresh	Returns you to the root folder of the archive and updates the file lists of all the subfolders.
	Password	Enter a password for one file or a group of files. Once you set the password you need to enter it again the next time you open the file.
	Compression Settings	Changes the settings for the files you are adding to the archive. Each type of archive has a different compression setting.
	Views	Provides you with five display options for the file list.



Large Icons: Displays a large file icon and its file name.



Small Icons: Displays a small file icon and its file name.



List: Displays a small icon and its file name.



Details: Displays a small icon, file name, modification date, file path in the archive, size, compression ratio, packed file size, type of file and CRC.



Thumbnails: Displays a thumbnail image of either the icon or the image, the image size and dimensions and the file name.

Creating an Archive

You can create an archive from the main ACDZip window or from the Windows Explorer shortcut menu. For more information on Archive file types see Chapter 5.

To create an archive in the ACDZip Main window:

1. Do one of the following:
 - Select File | New Archive.
 - Click the New Archive button.
2. Browse to the folder where you want to save the archive.
3. Type a File name and select an archive format from the Files of type drop-down menu.
4. Select Create.
5. Add files/folders to the archive by doing one of the following:
 - Drag files /folders to the file list from Windows Explorer, your desktop, or ACDSee.
 - Click the Add button to open the Add window.

Creating an Archive in Windows Explorer

There are two options for creating an archive in Windows Explorer. You can create a simple archive, or create a specific type of archive with a specific name. A number of create preferences from the Windows Explorer shortcut menu are specified as defaults in the Options settings.

To quickly create an archive from the Windows Explorer shortcut menu:

1. Select one or more files/folders for the archive.
2. Right-click the selection and select Create (name.filetype).

The archive name is determined in one of two ways:

- If a single file is used the archive takes the same name as the file.
- If more than one file is selected, the archive takes the name of the folder or the first common letters of the selected files, where the files are located.

To create a specific type of archive from the Windows Explorer shortcut menu:

1. Select files for the archive.
2. Right-click the selection and click Create Archive.
3. Browse to the folder where you want to save the archive.
4. Type a File name and select an archive format from the Files of type drop-down menu.
5. Select Create.
6. Add files to the archive by doing one of the following:
 - Drag files to the file list.
 - Click the Add button to open the Add Window.

Adding Files/Folders to an Archive

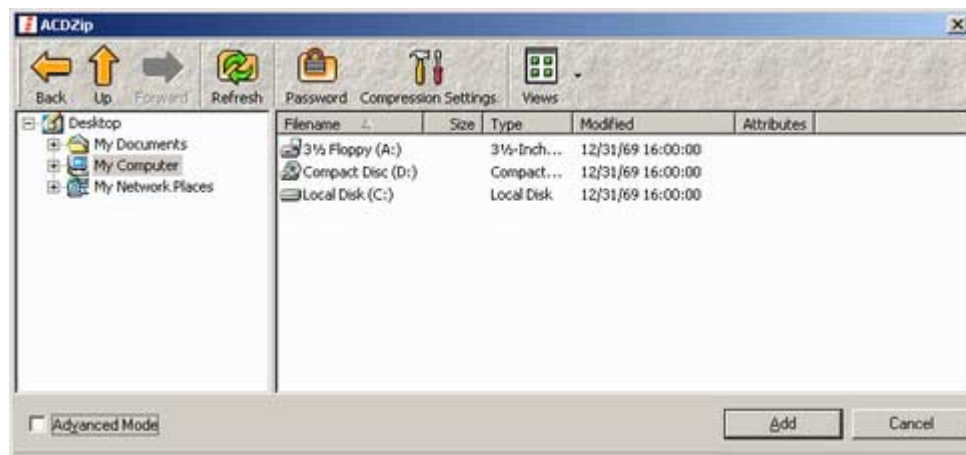
The Add window is designed with the look and feel of Windows Explorer. There are two different modes for the Add window, Simple and Advanced.

Simple Add Window

The simple Add window has two panes, the folder tree and the file list.

To add files and folders to the archive:

1. Select the place in the archive where the files/folders will be added.
 2. Do one of the following:
 - Click the Add button in the Main window.
 - Click Archive | Add.
 3. From the folder tree or file list, select the files or folders to be added.
 4. Click Add. The Add window dialog box closes and the files or folders are added to the archive.
- To add more file or folders repeat this procedure.



Advanced Add Window

The advanced Add window has three panes, the folder tree, the file list and the queue. The queue displays the structure of the archive. You can add existing files or folders to an exact place in the archive without leaving the Add window.

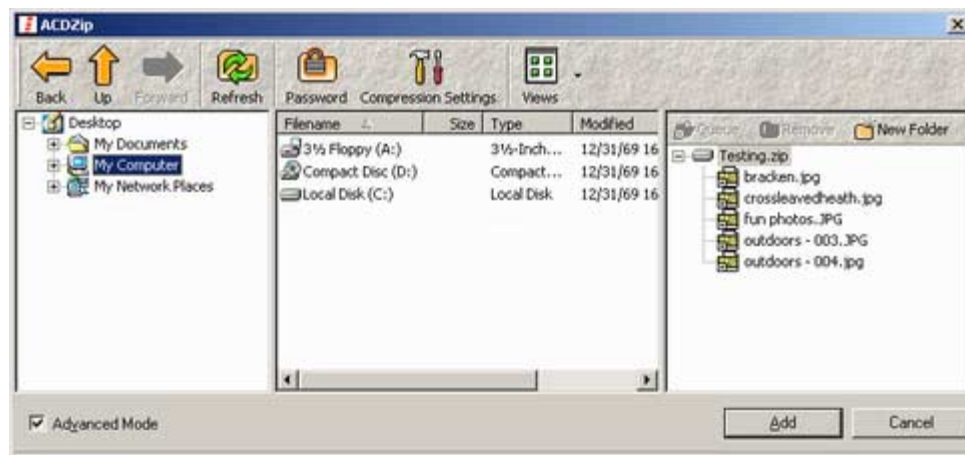
To add files and folders to the archive:

1. Do one of the following:
 - Click the Add button in the Main window.
 - Click Archive | Add.
2. Select the Advance Mode check box in the lower-left corner of the window.
3. From the folder tree, select the folder containing the files or folders to be added.

4. In the file list, select one or more files or folders.
5. Do one of the following:
 - Select the destination in the queue and click the Add button.
 - Double-click a single file to add it.
 - Drag the selection to the destination in the queue.
 - Drag files/folders from your desktop, Windows Explorer, or ACDSee to the archive icon in the Queue.
6. Repeat Steps 2 to 4 until all files or folders are queued.
7. Click Add. The Add window dialog box closes and the files or folders are added to the archive.

To delete files/folders from the queue, click the Delete button.

To add a new folder to the archive, click the Create Folder button.



Creating Folders in an Archive

Once you create an archive or open it in ACDZip, you can add folders to the folder tree of the archive.

To create a folder:

1. Do one of the following:
 - Click the Create Folder button.
 - Click Archive | Create Folder.
 - Right-click an item and select Create Folder.
 2. Type a name for the new folder and press Enter.
- You can now add/move files to this folder.

Note:

Support for folders is not available with the .mim archive, and .uee archive types.

Finding Files in an Archive

An archive may be very large with many files. If an archive contains a number of folders and subfolders, finding files with similar names can be time consuming.

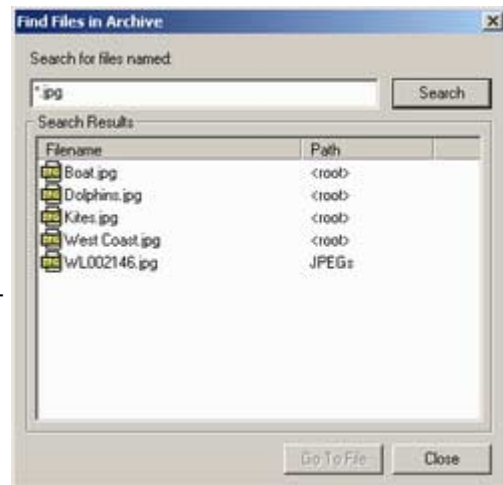
To find files in an archive:

1. Open an archive in ACDZip.
2. Do one of the following:
 - Click the Find button.
 - Click Tools | Find Files.
3. Type the file name, or a portion of the file name in the Search for files named box.
4. Click Search.

The search results are displayed below the search criteria.

To go to a file in the archive, do one of the following:

- Double-click the file name.
- Select a file and click Go To File.
- Reference the Path shown in the Search Results.



Viewing Images in an Archive

An archive may contain different types of files, including image files. ACDZip's Viewer supports 10 different image formats. If you have ACDSee installed you can view more than 40 different image types.

To view an image:

1. Select an image file.
2. Do one of the following:
 - Right-click the file and select View as Image.
 - Click Tools | View File | View as Image.
 - Double-click the file.
 - Press Enter.

The image opens in the Viewer. Only a single image can be viewed at a time, although more than one Viewer can be open at the same time.

Opening Files in an Archive

You can open files in an archive with ACDZip. If the file you are opening is supported by an application on your computer system, it is extracted to a temporary location and opened in that program.

To open a file, do one of the following:

- Double-click a file in the file list.
- Right-click a file and select Open.
- Click Tools | Open File.

Supported image files are opened in the ACDZip Viewer window.

Modifying and Saving Files Located in an Archive

Once a file in an archive is opened with an associated application, it can be modified, and then saved back to the archive or to another location. Windows saves the file in a temporary location until the file is saved.

To modify and save a file:

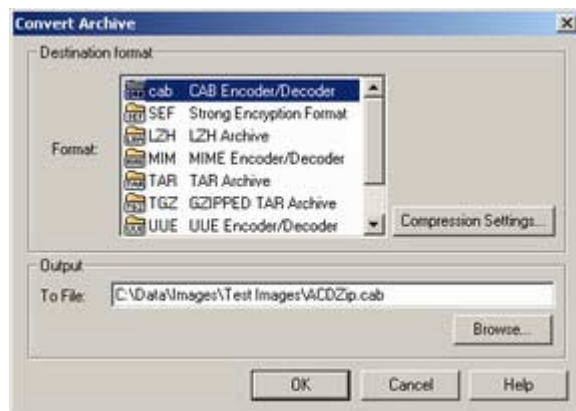
1. Open the file.
2. Modify the file in the associated application.
3. Do one of the following:
 - Select Save on the application menu. Click Yes in the Confirmation dialog box to add the file back to the archive.
 - Select Save As on the application menu. Browse to the location where you wish to save the file, and click Save. The file inside the archive remains unmodified.

Converting an Archive

ACDZip supports conversion to eight different archive formats. Using ACDZip's selection of formats, you can convert one format to another. Converting to archive formats that do not support passwords, eliminates the password from files within the archive.

To convert an archive:

1. Open an archive in ACDZip.
2. Do one of the following:
 - Click the Convert button.
 - Click Tools | Convert Archive.
3. In the Convert Archive dialog box, select an archive format.
4. Click the Compression Settings button, adjust the settings, and click OK. Not all formats have settings. See Chapter 5 for more information.
5. Browse to the folder where you wish to save the file. The current selected folder is set as the default. The archive name remains the same, and the format changes.
6. Click OK.



The archive in the main window is changed to the new archive type when the conversion is complete. For reasons of security, converting to a Strong Encryption Format (.sef) file requires additional steps. (page 37)

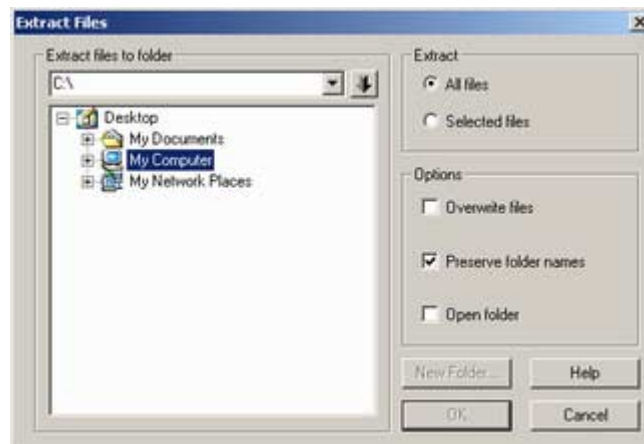
To convert an archive in Windows Explorer:

1. Right-click the archive in the file list and select Convert to.
2. From the drop-down menu, select the new archive type.

ACDZip creates a new archive with the selected archive extension in the same folder as the original archive. The original file is retained.

Extracting Files from an Archive

Archive extraction occurs from either the main ACDZip window or from the Windows Explorer shortcut menu.



To extract files from an archive in the main ACDZip window:

1. Open an archive in ACDZip.
2. Select one or more files to extract.
3. Do one of the following:
 - Click Archive | Extract Files.
 - Right-click the selection and select Extract.
 - Click the Extract button on the toolbar.
4. Browse to the location where you wish to extract the files.
5. Select the appropriate options in the Extract Files Window.
6. Click OK.

There are two options for creating an archive in Windows Explorer: the option to quickly create an archive and the option to provide more specifics about the archive. A number of the preferences for creating an archive are specified as defaults in the Options settings.

To quickly extract files in an archive from the Windows Explorer shortcut menu:

1. Select an archive.
2. Right-click the selection and select ACDZip | Extract to (file path) from the menu.

The file path is where the extracted files are located. ACDZip creates a subfolder in the directory where the archive is and names the new folder the same as the archive.

To extract files to a specific location from the Windows Explorer shortcut menu:

1. Select an archive.
2. Right-click the selection and select ACDZip | Extract to.
3. Browse to the location where you wish to extract the files.
4. Select the appropriate options in the Extract Files Window.
5. Click OK.

E-mail an Archive

You can send an archive via e-mail with ACDZip, provided you have an active Internet connection and an e-mail program, such as Outlook. When you send an e-mail, the archive is sent as an attachment.

To e-mail an archive:

1. Do one of the following:
 - Click the E-mail button.
 - Click Tools | E-mail Archive.
2. Enter the recipients address and any details you want add.
3. Click Send.

Creating a Self-extracting Archive

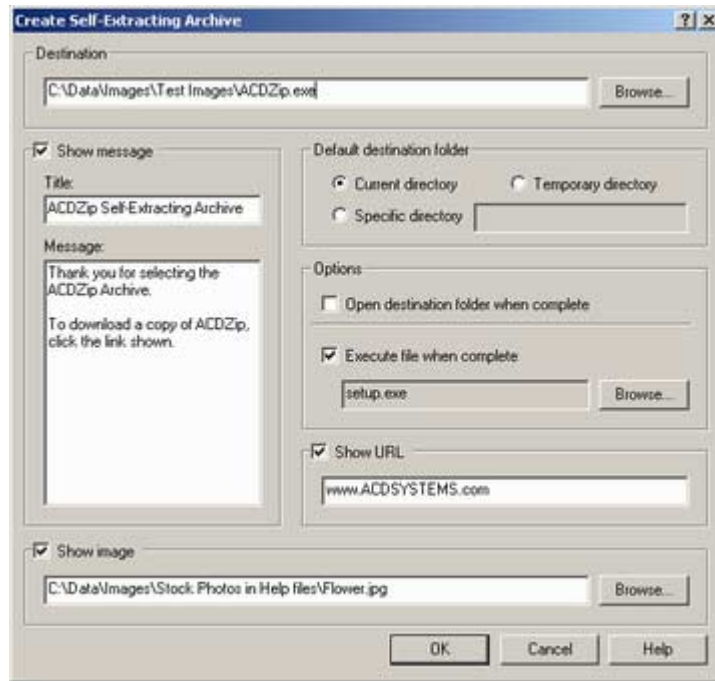
With ACDZip you can create an archive that automatically extracts the files within it. This self-extracting archive, with an .exe extension, is useful if the individual who receives the archive does not have an archive extraction program. Files and archives that have password protection cannot be used in a self-extracting archive.

To create a self-extracting archive:

1. Open an archive in ACDZip.
2. Click Tools | Create Self-Extracting Archive.
3. In the Create Self-extracting Archive window, select the preferences you want to add.
4. Click OK.

To create a self-extracting archive in Windows Explorer:

1. Right-click an archive in the file list, and select Create Self-Extracting Archive.
2. In the Create Self-extracting Archive window, select the preferences you want to add.
3. Click OK.



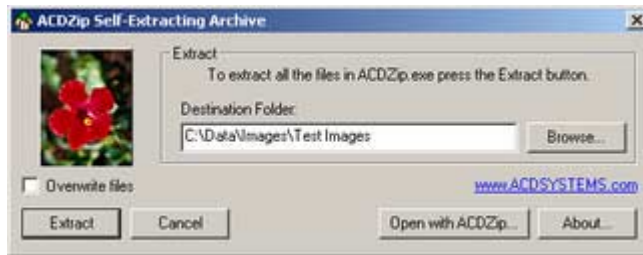
Preferences

There are a number of options available that you can modify before creating the .exe file.

Destination	Shows the path to the folder where the finished archive is saved.
Show message	Displays a pop-up window when the archive is opened. This contains text information you wish to show the receiver before they extract the archive.
Default destination folder	The destination folder is where the files in the archive are saved after extraction. If the path does not exist on the end users system, it is created before extraction. The end user can modify this option prior to extraction.
Options	If Open destination folder when complete is selected, Windows opens the folder containing the extracted contents of the archive in a separate window. If Execute file when complete is selected, the designated file in the archive opens at the completion of the archive extraction.
Show URL	Displays an active Web address in the archive execution window.
Show Image	Displays an image in the archive execution window.

Opening a Self-extracting Archive

The archive is created as an executable file and stored in the designated directory. The executable can be sent to someone who does not have an archive extraction program like ACDZip, so they can open and use the files.



To open the self-extracting archive:

1. Double-click the .exe file.
2. Select a Destination Folder.
3. Click Extract.

You can provide details on how to open the archive in the Show Message text box. By clicking the Open with ACDZip button, you can view the files in the archive prior to extracting. This button is only displayed if ACDZip is installed.

4

Chapter 4

Options and Plug-in Settings

ACDZip features a customizable user interface and file management tools. You can specify the look of the user interface and thumbnail display size. Also, you can select which file formats are opened by ACDZip and add items to the shortcut menu in Windows Explorer.

To open the options dialog box, do one of the following:

- Click the Options button.
- Click Tools | Options.

There are four option tabs:

General	Selects how the interface looks, how files and folders are monitored, and default archive type
File Associations	Determines which types of archives are handled by ACDZip
Windows	Selects the menu items to be added to the Windows Explorer shortcut menu
Images	Sets how the preview thumbnail and Viewer images appear in ACDZip

General Options

With the General options, you can specify how you want the interface to look, how files and folders are monitored, and the default archive type.

File/folder list

These options determine how each item in the file list is displayed.

Hot tracking	Displays selected items in the file list underlined in blue.
Show gridlines	Shows or hides the display of the gridlines in the main window.
Full row select	Highlights the entire row of a file, not only the file name.

Archives

These options monitor the activity of the files and folders within an archive.

Monitor open documents	Monitors any document that is opened from within the archive for changes. A confirmation of changes appears before the file is saved back to the archive.
Confirm delete operations	Opens a confirmation dialog box each time you use the delete operation.
Clear archive flag on add	Clears the Attribute flag in Windows Explorer to indicate that the file has been archived. The flag will remain cleared until the file is opened outside the application.

Toolbar

These options determine how the toolbars are displayed. These options can also be changed by customizing the toolbar.

Show toolbar	Hides or shows the toolbar.
Show background pattern	Uses the same background skin for ACDZip as is used in the display of the toolbar.
Show large buttons	Displays the buttons on the toolbar in a larger format. This can also be changed by customizing the toolbar.
Show button labels	Displays the button names on the toolbar. This can also be changed by customizing the toolbar.

Default Archive Type

The default extension is shown in the Windows Explorer shortcut menu and the Create dialog box.

Viewer

The Viewer is a designated application that opens a file in the archive in ASCII format. Files can be opened by ACDZip or by an external viewer. Notepad is a common application for viewing the ASCII code of a file.

If you select the External File Viewer only supports text files check box, you receive a warning if the designated application is unable to open the file.

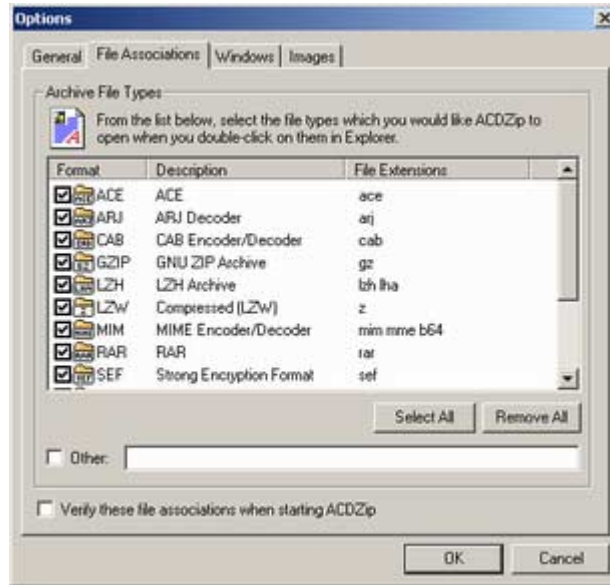
File Associations Options

ACDZip supports various archive file types. Select a file type and make ACDZip the default application to open the file.

To set the file associations for ACDZip:

1. Select the File Associations tab in the Options dialog box.
2. Select the associated archive type check box in the Format column.

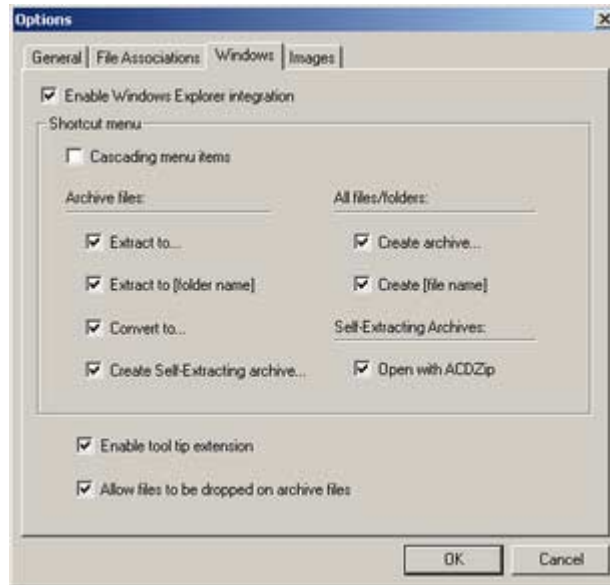
3. Click OK.



The Select all and Remove all buttons select and clear all the check boxes. If you wish to disable a file association, clear the check box located to the left of the archive type.

Windows Options

The Windows options add ACDZip items to the shortcut menu in Windows Explorer.



Cascading Menu Items

When this option is selected, the ACDZip items are added as a submenu to the Windows Explorer shortcut menu. When the option is cleared, all ACDZip items appear in the Explorer menu.

Archive Files

Extract to	Opens the Extract Files dialog box. You can select the directory where the files are saved.
Extract to [folder name]	Creates a subfolder in the directory with the same name as the archive. The files of the archive are saved to this location.
Convert to	Automatically converts the archive to the archive type selected from the submenu. The conversion preserves the original file and creates a new archive.
Create self-extracting archive	Opens the Create Self-Extracting Archive dialog box. Uses the selected archive to create the self-extracting archive.

All Files/Folders

Create archive	Opens the Create dialog box. You can select the file name and the directory where the files are saved.
Create [file name]	Creates an archive from the selected files/folders. The archive is named for the directory where the files/folders are located. The created archive is saved to the same directory as the files. The default archive type is set in the General options, it cannot be changed in the shortcut menu.

Self-Extracting Archives

Open with ACDZip	Adds an option to the Windows Explorer menu to use ACDZip to open self-extracting files. You can extract only selected files from the self-extracting executable using this option.
------------------	---

Enable tool tip extension

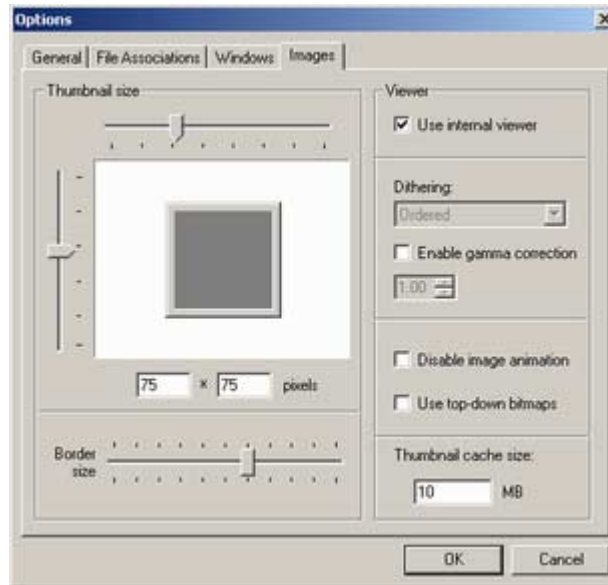
The tool tip extension adds a line to the file mouse-over that indicates the number of files in the archive. This option is not available with Windows 95.

Allow files to be dropped on archive files

When this option is selected, you can drag a file to an archive and it is automatically added. This also works with archives on the desktop.

Images Options

The Images options set how the preview thumbnail and Viewer images appear in ACDZip.



Thumbnail size

You can adjust the thumbnail size by moving the vertical and horizontal slider bars or typing the desired size in the boxes. Any changes made are reflected in the preview frame.

Border Size

The border size is a manually adjusted slider. When this is moved, the border shown in the example changes to reflect the appearance around the thumbnail.

Viewer

The Viewer options determine how images are handled when opened in ACDZip.

- | | |
|-------------------------|--|
| Use internal viewer | Uses ACDZip's internal viewer to displays many popular image formats. If cleared, the default application for the file type will open the image. |
| Dithering | Dithers an image to represent shades of gray or colors on screen that can not be produced directly. |
| Gamma Correction | Adjusts the level of gamma applied to an image in the image viewer. Lower numbers produce darker pictures and higher numbers produce lighter ones. The default is 1. |
| Disable image animation | Displays the first frame of an animated image when opened in the Viewer. |

Use top-down bitmaps	Uses a different method of drawing an image in the Viewer. This is more important for computers with older video cards and video drivers
Thumbnail cache size	Designates the sizes of the thumbnail caches in Mb. When ACDZip displays thumbnails, a small copy of the image is cached to the hard disk drive. This increases how fast the image is displayed when viewing the file during the session.

Plug-in Settings

ACDZip works with a number of different plug-in settings. There are plug-ins for:

- Image Decoding
- Image Encoding
- Archive

You can access the Plug-in settings by selecting Tools | Plug-in Settings or change the settings by clicking the Compression Setting button in the Covert Archive dialog box. Each settings tabbed page is made up of the following parts:

Plug-in folder

This will show the file folder where the plug-ins are located. You may browse to another folder by clicking the Browse button and selecting the appropriate folder from the folder tree.

Plug-ins List

The list shows the name of each plug-in located in the selected folder, a brief description of the plug-in, and, for the decode/encode plug-ins, the type of files it deals with.

The order of the decode/encode plug-ins can be changed by selecting a plug-in, and clicking the Move Up or Move Down buttons. The order shown in the list is the order ACDZip accesses the plug-ins to accomplish a task.

Each plug-in may have some additional properties or settings that can be changed by clicking the Properties button.

If you wish to disable a plug-in, clear the check box located to the left of the plug-in name.

Select the Other check box and type the archive extensions in the text box for archive types related to the ones in the plug-ins list.

5

Chapter 5

Archive Types and Compression Settings

ACDZip contains read support for 13 archive formats and write support for eight archive formats. Many of the archive formats support different extensions when reading (decoding) or writing (encoding). To see a complete list of the supported file extensions check the file associations in the Options dialog. Each format lists the supported extensions.

ACE Archive

ACE is an archive format developed and maintained by www.winace.com. ACDZip supports the decoding of .ace archives.

ARJ Archive

The ARJ archive format provides an excellent combination of speed and compression. It is often used for compressing databases, graphics files, and large documents. ACDZip only reads the ARJ archive format. ACDZip supports the decoding of .arj archives.

Cabinet Archives (CAB)

The CAB archive format, also called a cabinet archive, was created by Microsoft to store compressed files in a logical order. Cabinet archives are used to store compressed installation files. The files are decompressed when the installation is initiated. Large files can be compressed and included in more than one cabinet file, each of which logically points to the next file, with all files contained in a logical folder. A cabinet file often contains a digital signature for confirmation, but this is not used in ACDZip. CAB archive files are created using Lempel-Ziv compression. ACDZip supports the encoding and decoding of .cab archives.

Adjusting Settings

Customize the compression settings using the CAB Encode Settings.

To save any adjustments for the next time you use the CAB plug-in:

Select Save these settings as defaults.



Disk Spanning

Spanning creates multi-cabinet files - multiple files within the same archive.

Multi-cabinet filenames are numbered to represent their place in the sequence (e.g. filename1.cab, filename2.cab, filename3.cab). If one of the files in a multi-cabinet set is missing, then it can no longer be viewed as a whole.

To enable spanning:

Select Enable spanning.

When spanning is enabled, a disk name and size should be specified. The name is used by the cabinet extractor to identify the files as part of the same archive. The size sets a maximum size for the files in the archive.

To name a set of multi-cabinet files:

Type a name in the Disk Name field.

To specify a disk size:

1. Click the Disk Size drop-down arrow.
2. Do one of the following:
 - Select a predetermined size.
 - Select Custom.
3. If Custom is selected, type a size in the KBytes field.

To prompt you each time a new file is created:

Select Prompt for new disk.

Compression Methods

If you would like to add compression to your CAB archive, the CAB plug-in supports MSZIP and various levels of LZX compression.

To add compression to your archive:

1. Click the Compression Method drop-down arrow.
2. Select one of the following:

- None: no compression
- MSZIP: similar to the deflation compression method used by PKZip
- LZX (levels 15 to 21): uses static Huffman encoding. LZX uses more memory, but can produce better compression ratios than MSZIP

GZIP Archive

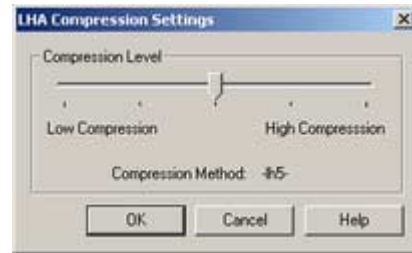
The GZip archive format is used most often in the UNIX system environment. GZip performs compression of regular files only. ACDZip supports the encoding and decoding of GZIP archives.

LHA Archive

The LHA Archive format is a DOS compression format that uses the extension .lzh. This archive format is used extensively in Japan. ACDZip supports the encoding and decoding of .lzh archives.

To adjust the compression level:

1. Do one of the following:
 - Move the slider to the left for less compression.
 - Move the slider to the right for more compression.
2. Click OK.



LZW Archive

The LZW archive format is based upon the development of Abraham Lempel, Jacob Ziv, and Terry Welch. The primary use of this compression type is with GIF and TIFF image formats. ACDZip supports the encoding and decoding of .z archives.

MIM Archive

The MIM archive format (Multipurpose Internet Mail Extensions) is similar to the UUE archive format. The MIM archive uses only the alphanumeric characters in the ASCII character set for storage and transmission of files. This makes the archive slightly larger than the UUE format. ACDZip supports the encoding and decoding of .mim archives.

RAR Archive

The RAR archive format is compressed with one of six different compression methods. The compression is balanced against the amount of time required to create the archive. The RAR archive type benefits from being composed of files with similar content (i.e. ASCII, binary, etc). ACDZip supports the decoding of .rar archives.

Susie Archive

Susie is a popular image viewer in Japan that supports Susie plug-ins (.spi). The ACD Susie plug-ins let you use Susie plug-ins with ACDSee.

TAR Archive

The TAR archive format, named for "Tape ARchive," is a UNIX shell command that takes a number of specified files and creates a single file called an "archive." The archive contains files that are not compressed, just collected in one file. A TAR archive is most frequently used to transfer files among UNIX systems. ACDZip supports the encoding and decoding of .tar archives.

TGZ Archive

The TGZ archive format is a combination of the TAR and GZIP archive formats. The TAR archive combines files into a single file, and the GZIP compression reduces the file size. This archive type supports the following formats:

GZ TAR Z LZW TGZ

UUE Archive

The UUE archive format is used to transmit binary files over a medium that supports simple ASCII data. The encoded archive uses only ASCII characters in the created archive. The UUE format is often used in the transmission of e-mail. Some e-mail programs do not decode UUE files and display only the ASCII characters in the message. A decoded UUE archive is transformed into the original form, ignoring any leading and trailing lines. ACDZip supports the encoding and decoding of .uue archives.

UUE Settings

A UUE file can contain multiple parts. This is ideal for when you want to break up a large file into several small files for storage on disk. You must specify a maximum file size when creating multi part UUE files.

To create a multi part UUE file:

Select Create Multi-part UUE.

To specify a disk size:

1. Click the Size drop-down arrow.
2. Do one of the following:
 - Select a predetermined size.
 - Select Custom.
3. If Custom is selected, type a size in the KB field.

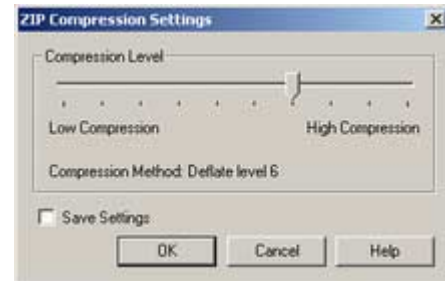


ZIP Archive

The ZIP archive format is the most commonly used archive on the World Wide Web. When you download a file from a Web site, it most often is saved as a ZIP archive. The format incorporates various degrees of file compression, with high compression requiring more time to create the archive. Compression varies widely based upon the type of files being compressed. A text file can be compressed to as small as 10% of its original size, while graphic files experience very little compression. ACDZip supports the encoding and decoding of .zip archives.

To adjust the compression level:

1. Do one of the following:
 - Move the slider to the left for less compression.
 - Move the slider to the right for more compression.
2. Click OK.



Strong Encryption Format (SEF)

SEF files are cryptographic archives that are used to store files in a secure manner. These files make use of the Twofish encryption algorithm with a 256-bit key.

Because of the highly optimized compression and encryption routines used with the Strong Encryption Format, a seamless integration occurs with almost any kind of application. For example, suppose you have several TIFF images of faxes that you wish to remain private. Simply add them to a .sef archive and delete the originals. Any time you wish to work with your faxes, all you have to do is select the file and enter your password.

Creating a Strong Encryption Format Archive

The Strong Encryption Format (.sef) is a proprietary format of ACD Systems. The .sef archive format is a secure way to store files, requiring a password to open them.

To create an .sef archive:

1. Click File | New Archive or click the New Archive button.
 2. Browse to the folder where you want to save the archive.
 3. Type a File name and select Strong Encryption Format from the Files of Type drop-down menu.
 4. Click Create.
 5. Type a password and click OK.
 6. Type the password again to verify and click OK.
- If your password is shorter than 12 characters you receive a warning.

The created archive now functions similarly to other archives. You can add files and folders from the

Add Window, open files, view images, or convert the archive to another format.

All files that are added to the archive are highlighted in red. This indicates that they are password protected.

Note:

The last used password is cached in memory until a certain library function is called by ACDZip. Prior to the cache being cleared on the computer creating the archive, the file may open without having to enter a password, but only on the computer where it was created.

SEF Archive Settings

It is possible to control the amount of compression used when creating your encrypted archive. The compression affects the .sef archive and not the files contained within.

To adjust the compression level, move the slider to the desired level of compression.

If you would like to save this setting as the default for future use, select Save settings.

The length of time it takes to create an archive increases as the compression level is raised.



Compression

The .sef archive uses ZLIB lossless data-compression to compress files for archival purposes. The percentage of compression can vary depending on the file type, data contained within the file, and the level of compression you define in the settings.

If you compress JPEG files there will be almost no compression, no matter what you set the level to, because JPEG files are already compressed. Also, if you compress very small files there will be little noticeable difference.

Where you will get a difference is, for example, when compressing ten 1Mb Word documents with Level 9, and then comparing that to a compression of the same documents using Level 3.

Converting to a Strong Encryption Format Archive

Unlike converting other archive types, the Strong Encryption Format requires a password as part of the archive. Because of this feature, you must provide a password when you convert to a .sef archive.

To convert an archive to a .sef archive:

1. Open an archive and click Tools | Convert Archive.
2. Select Strong Encryption Format under the Destination Format.
3. Type a path or Browse to the location where the file will be saved.
4. Click Format Settings. Select the appropriate options. Click OK.

5. Type a password and click OK.
6. Verify the password and click OK.

All files/folders in the archive, and any added ones, are highlighted in red. This indicates that they are password protected.

Entering Passwords

The .sef archive password is not optional; you must enter a password to proceed. If the password you have entered is not considered appropriate, ACDZip will issue a warning.

Should you wish to not receive these warnings, select the Never show this warning again check box.

Important

There is no record kept of the password you use with a .sef file.

Using Appropriate Passwords

Using passwords of less than 12 characters makes it feasible for others, given enough time, to break into your SEF files.

The mathematics behind this premise are as follows; if a password is 12 characters long and consists of uppercase and lowercase letters, as well as numbers and punctuation marks, the number of possible characters that can be used for each letter of the password is 256. This means that there are 256^{12} or 7.9×10^{28} different password combinations. No amount of computing power currently available would be able to run through this many combinations in a reasonable time (it would take 1.0×10^{10} years to break this password).

E.g., TH1Sis@test* = 12 characters

Appendix 1: Keyboard Shortcuts

Keyboard Shortcuts

Keyboard shortcuts are available for many of the ACDZip commands. These shortcuts are useable in the main window and the Viewer.

Main Window

Ctrl + A	Select All
Ctrl + C	Copy
Ctrl + D	Add
Ctrl + E	Extract
Ctrl + F	Find Files
Ctrl + Shift + F	Show FolderTree
Ctrl + M	E-mail
Ctrl + N	New
Ctrl + O	Open Archive
Ctrl + P	Open File
Ctrl + Shift + S	Show Status Bar
Ctrl + T	Create Folder
Ctrl + Shift + T	Show Toolbar
Ctrl + V	Paste
Numpad +	Sort Forward
Numpad -	Sort Reverse
Numpad 1	Arrange Files by Name
Numpad 2	Arrange Files by Modified
Numpad 3	Arrange Files by Path
Numpad 4	Arrange Files by Size
Numpad 5	Arrange Files by Ratio
Numpad 6	Arrange Files by Packed
Numpad 7	Arrange Files by Type
Numpad 8	Arrange Files by CRC
Ctrl + Numpad 2	Show Modified Column
Ctrl + Numpad 3	Show Path Column
Ctrl + Numpad 4	Show Size Column
Ctrl + Numpad 5	Show Ratio Column
Ctrl + Numpad 6	Show Packed Column
Ctrl + Numpad 7	Show Type Column
Ctrl + Numpad 8	Show CRC Column
Delete	Delete File
F1	Help
F2	Rename
Ctrl + Z	View File

Viewer Window

F1	Help
Esc	Close window
Ctrl+Shift+C	Copy to Clipboard
Ctrl+O	Open an archive
Ctrl+S	Save As
Ctrl+Shift+F	Toggle Full Screen mode
Page Up	Previous image
Shift+Page Up	Previous page
Shift+Page Down	Next page
Shift+Home	First page
Shift+End	Last page
+	Zoom In
-	Zoom Out
NumPad *	Zoom to fit screen
NumPad /	Zoom 100%

Appendix 2: Archive and Image Format Support

Archive Format Support

ACDZip supports read and write functionality for all archives listed.

Read Support

ACE	ACE archive.
ARJ	ARJ archive.
CAB	CAB archive. MSZIP / LZX.
GZIP	GNU Zip archive.
LZW	Compressed archive.
LZH	LHA archive. Lhd, lz4, lh0, lh1, lh4, lh5, lh6, lh7.
MIM	MIME archive.
RAR	RAR archive.
SEF	Strong Encryption Format archive. ACD System's secure proprietary format.
TAR	Tar archive. Unix based format.
TAZ	TAZ archives. Unix based format.
TGZ	Gzip/Tar archive.
UUE	UUE archive.
Z	Packed archive. Unix based format.
ZIP	ZIP archive Deflate.

Write Support

CAB	CAB archive. MSZIP / LZX.
LZH	LHA archive. Lhd, lz4, lh0, lh1, lh4, lh5, lh6, lh7.
MIM	MIME archive.
SEF	SEF Strong Encryption Format archive.
TAR	TAR archive for uncompressed UNIX files.
TGZ	Gzip/Tar archive. Combination of Gzipped (GZIP), Tar (TAR).
UUE	UUE archive.
ZIP	ZIP archive Store.

Image Formats

ACDZip supports the viewing of 10 different image formats. If you have ACDSee installed on your computer, you can view more than 40 different image types. To obtain a copy of ACDSee visit our Web site at www.acdsystems.com.

Read Support

BMP	Windows Bitmap	Windows and OS/2; 2/8/16/24/32 bpp; RLE and uncompressed
EMF	Enhanced Metafile Format	Win32 enhanced placeable metafiles
GIF	Graphics Interchange Format	Single page and animated; 87a and 89a

JPG	JPEG JFIF	JFIF and Adobe™ CMYK
PCX	ZSoft Publisher's Paintbrush	All sub-types supported
PIC	SoftImage PIC	All sub-types supported
PNG	Portable Network Graphics	All sub-types supported
TGA	TargaTGA	All sub-types supported
TIFF	Tag Image File Format	1/2/4/8/12/16 bits per sample, 1-4 samples per pixel. Bilevel/RGB/Paletted/CMYK/YCrCb/LOGL/LOGLUV. Uncompressed/PackBits/LZW//ThunderScan/ SGILog/CCITT/ZIP/NEXT/New-JPEG (no v6.0 JPEG sup- port)Support for multi-page documents
WMF	Windows Metafile Format	Win 3.x placeable metafiles

Appendix 3: Contacting ACD Systems

ACDInTouch Service

ACDInTouch is your connection to us at ACD Systems.

Through ACDInTouch you can access information on special offers, free digital imaging resources, Columns and Articles, Image Collection, and Newsletters/Subscriptions. If you choose to become a member you gain even more advantages. ACDInTouch changes regularly to keep you updated with the newest information about the digital imaging community.

To connect to ACDInTouch, do one of the following:

- Click the ACDInTouch button.
- Click Help | ACDInTouch.

About the ACDInTouch Service

ACDInTouch is a data exchange service. When you connect, information is sent to you so that you can read up-to-date information directly in the ACDInTouch pane. This information is relevant to your product, such as upgrades, add-ons, and related software from ACD Systems that may also be of interest to you.

For information on ACD Systems' privacy policy, visit our Web site at:
www.ACDSYSTEMS.com/english/company/privacy.htm

Contacting ACD Systems

For the most recent contact information, please visit our Web site at:
www.ACDSYSTEMS.com/english/company/contact-us/

Global Service and Support

ACD Systems provides a number of ways to assist you when you require support or further information.

- Technical Support and Feedback
- Language Support
- Newsletter and Subscription

Getting Updates

You may download software updates from:
www.ACDSYSTEMS.com/english/support/productupdates/

For up-to-date information on this and other products from ACD Systems click the ACD Systems button on the top of the toolbar. If you are not connected to the Internet, you can try another time. Our Web site address is www.ACDSYSTEMS.com

Index

- ACD Systems 1, 43
 - ACDInTouch service 43
 - contacting ACD Systems 43
- ACE archive 33
- Add window 10
 - advanced mode 10
 - simple mode 10
 - toolbar 10
 - toolbar buttons 17
- adding files/folders 19
 - advanced add window 19
 - simple add window 19
- archive 3, 41
 - ACE 33
 - ARJ 33
 - CAB 33
 - GZip 35
 - LHA 35
 - LZW 35
 - MIM 35
 - RAR 35
 - read support 41
 - SEF 37
 - Susie 36
 - TAR 36
 - TGZ 36
 - UUE 36
 - write support 41
 - ZIP 37
- ARJ archive 33
- Cabinet archives (CAB) 33
 - adjusting settings 34
 - compression methods 34
 - disk spanning 34
- converting an archive 22
 - in Windows Explorer 23
- creating a self-extracting archive 24
- creating an archive 18
 - in the main window 18
 - in Windows Explorer 18
- creating folders 20
- customizing toolbars 13
 - add buttons 13
 - add separators 13
 - button labels 14
 - chevrons 14
 - rearrange buttons 13
 - remove buttons 13
 - remove separators 13
- cyclic redundancy check (CRC) 9
- e-mail an archive 24
- Extract Files dialog box 11
 - extract 11
 - new folder 12
 - options 11
 - path box 11
- extracting files 23
 - in the main window 23
 - in Windows Explorer 24
- features of ACDZip 2
 - archive manager 2
 - security 3
 - self-extracting archives 3
 - Windows Explorer 2
- file associations options 28
- finding files 21
- general options 27
 - archives 28
 - default archive type 28
 - file/folder list 27
 - toolbar 28
 - viewer 28
- global service 43
- GZIP archive 35
- Help tools 4
 - context-sensitive help 5
 - navigation pane 5
 - toolbar buttons 5
 - What'sThis? 5
- image formats 41
 - read support 41
- images options 31
 - border size 31
 - thumbnail size 31
 - Viewer 31
- installing ACDZip 3
 - from a CD 3
 - from a downloaded 3
- keyboard shortcuts 40
 - main window 40

- Viewer window 40
- LHA archive 35
- LZW archive 35
- main window 8
 - cyclic redundancy check (CRC) 9
 - file list 9
 - folder tree 9
 - hot tracking 9
 - menu bar 9
 - red highlighting 9
 - status bar 10
 - toolbar 9
 - toolbar buttons 15
- MIM archive 35
- modifying and saving files 22
- opening files 21
- passwords 39
 - appropriate passwords 39
 - entering 39
- PDF document 5
 - browsing with bookmarks 6
 - changing the page layout 7
 - finding words 6
 - following links 6
 - retracing your steps 6
- plug-in settings 32
 - plug-in folder 32
 - plug-ins list 32
- RAR archive 35
- SEF: see Strong Encryption Format 37
- self-extracting archive 24
 - create 24
 - in Windows Explore 24
 - opening 25
 - preferences 25
- starting ACDZip 4
- Strong Encryption Format 37
 - compression 38
 - converting to 38
 - creating 37
 - entering passwords 39
 - settings 38
- support 43
- Susie archive 36
- system requirements 4
- TAR archive 36
- TGZ archive 36
- toolbars 15
 - add window 17
 - main window 15
- uninstalling ACDZip 4
- updates 43
- user interface 8
- using ACDZip 15
- UUE archive 36
 - UUE settings 36
- Viewer 12, 28
 - file menu 12
 - help 13
 - view an ima 12
 - view menu 13
- viewing images 21
- Windows Options 29
 - all files/folders 30
 - allow files to be dropped on archive files 30
 - archive files 30
 - cascading menu items 30
 - enable tool tip extension 30
 - self-extracting archives 30
- ZIP archive 37
 - compression 37
