

# ACDSee 9 Photo Manager tutorials > Fixing red eye

Opening the Edit Panel

Using the Red Eye Reduction tool

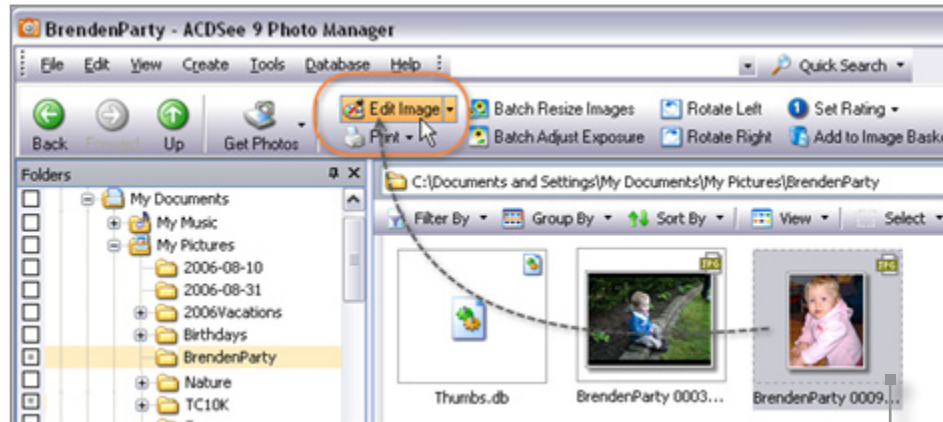
Preventing pixel bleed

Saving changes

Key concepts

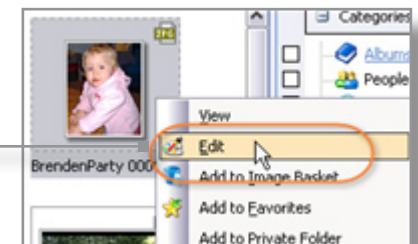
The Red Eye Reduction tool in ACDSee 9 has been improved and it is now easier than ever to get rid of this common problem. This tutorial shows you the most effective way to use this tool in order to get the best possible result.

The Red Eye Reduction tool is an editing tool that is found on the Edit Panel.



To open the Edit Panel, click the photo with red eye, and then click **Edit Image**.

You can also open the Edit Panel by right-clicking the photo, and then clicking **Edit**.



# ACDSee 9 Photo Manager tutorials > Fixing red eye

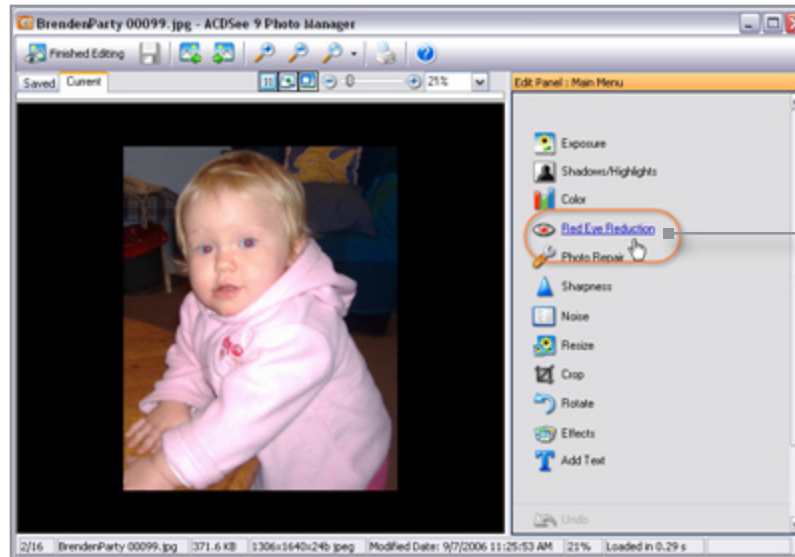
Opening the Edit Panel

Using the Red Eye Reduction tool

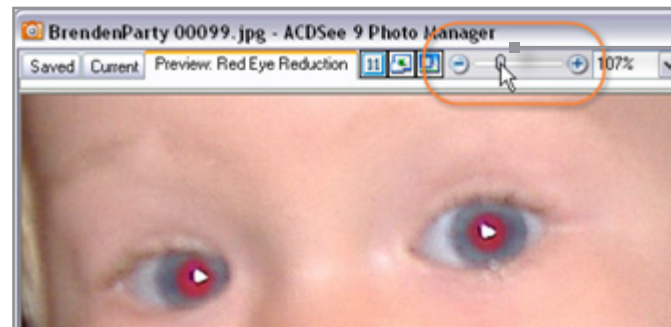
Preventing pixel bleed

Saving changes

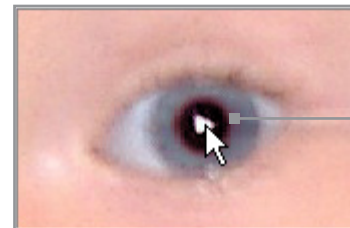
Key concepts



In the Edit Panel, click **Red Eye Reduction** to open that tool.



In the Red Eye Reduction panel, drag the slider to the right to zoom right in and enlarge the eyes.



When the red is clearly contained within the pupil as in this example, you can simply click in the middle of the eye. ACDSee replaces the red pixels with black.

Notice that not all the red pixels are replaced. This makes for a more natural appearance.

# ACDSee 9 Photo Manager tutorials > Fixing red eye

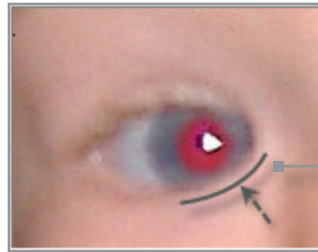
Opening the Edit Panel

Using the Red Eye Reduction tool

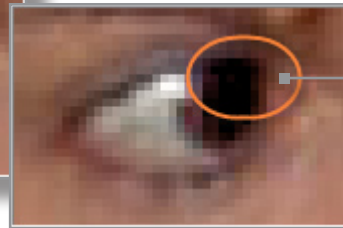
Preventing pixel bleed

Saving changes

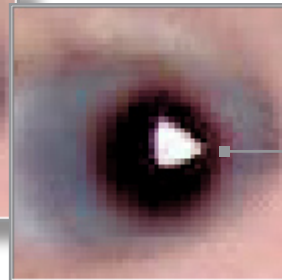
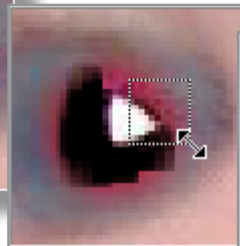
Key concepts



If the red is touching the skin of the eye, or actually spreading over it, clicking in the red area can cause a bleeding effect over the skin area.



This example shows how the black pixels have bled into the surrounding eyelid.



To prevent bleeding, zoom in even further. Then drag and select very small areas of the red at a time. This applies the effect gradually and allows you to control exactly where you want the replacement pixels to go. Click **Undo**, or press **Ctrl + Z** if you are not happy with the result.

Remember to leave some red or the eye will look unnatural.

# ACDSee 9 Photo Manager tutorials > Fixing red eye

Opening the Edit Panel

Using the Red Eye Reduction tool

Preventing pixel bleed

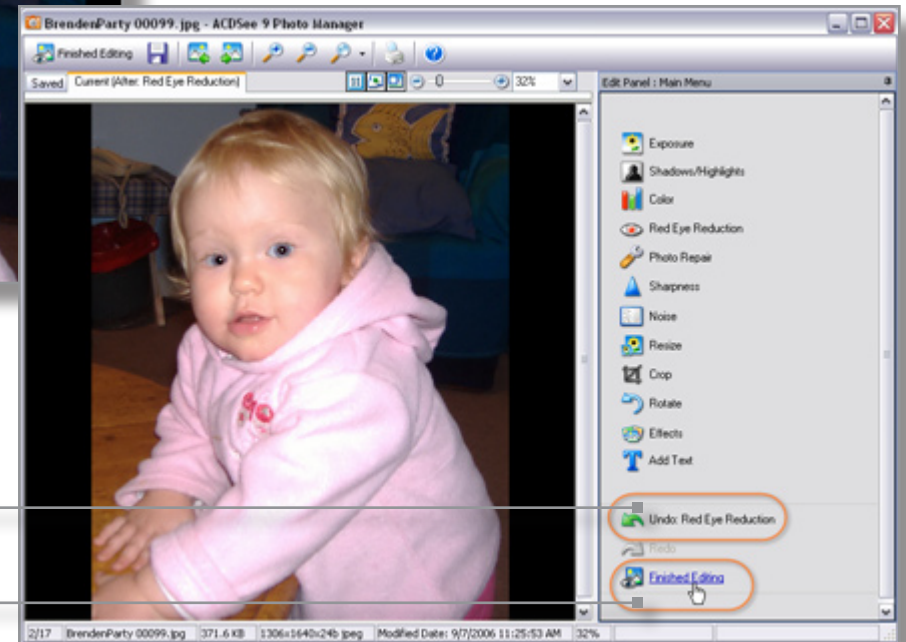
Saving changes

Key concepts



Zoom out to see if the eyes look natural.

If you are happy with the changes, click **Done** to exit the Red Eye Reduction tool.

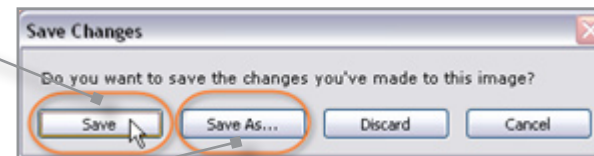


You can still undo the changes in the Edit Panel by clicking **Undo Red Eye Reduction**.

If you want to keep the changes, click **Finished Editing**.

To save and overwrite the existing file, click **Save**.

To save the changes to a new file, click **Save As**, type a new name in the **File name** field, and then click **Save**.



Opening the Edit Panel

Using the Red Eye Reduction tool

Preventing pixel bleed

Saving changes

Key concepts

### Check to see if you learned these key concepts:

- » The Red Eye Reduction tool in ACDSee 9 has been improved and is extremely easy to use, often needing only one click to fix red eye.
- » If the red area is surrounded by the pupil in the photo, using a single click works well. If the red touches the skin of the eye in the photo, you may need to drag several times over small areas to get the best effect.
- » You can click **Undo** or press **Ctrl + Z** to reverse any changes you do not like.
- » It is a good idea to leave some red behind or the eye can look unnatural.

### For general inquiries, please contact:

ACD Systems Ltd.  
2261-C Keating Cross Road  
Victoria, BC  
V8M 2A5  
p 250-544-6701  
f 250-544-0291  
[www.acdsee.com/support](http://www.acdsee.com/support)