

ACDSee 9 Photo Manager tutorials > Creating a desktop showroom

1 What is ACDSee Showroom?

2 Creating a showroom

3 Changing the showroom appearance

4 Selecting other showroom options

5 Key concepts

ACDSee Showroom is fun widget that you can use to showcase and enjoy your photos. You can change the size and appearance of the Showroom window, and you can even run several Showroom windows at once!

You can launch ACDSee Showroom from within ACDSee by clicking **Create | ACDSee Showroom** or from the Start menu by clicking **Start | Programs | ACD Systems | ACDSee Showroom**.



ACDSee 9 Photo Manager tutorials > Creating a desktop showroom

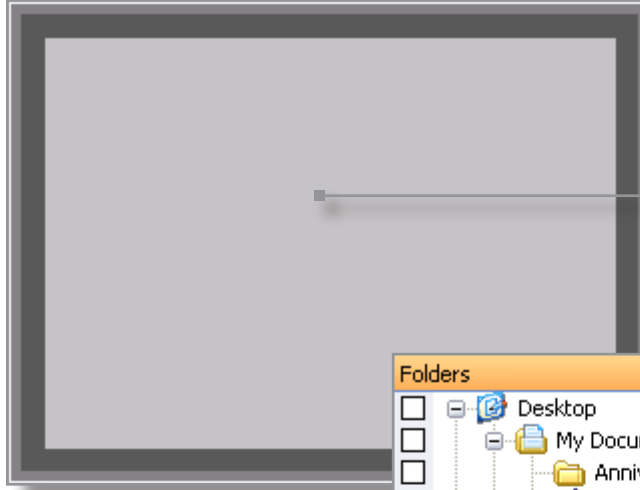
1 What is ACDSee Showroom?

2 Creating a showroom

3 Changing the showroom appearance

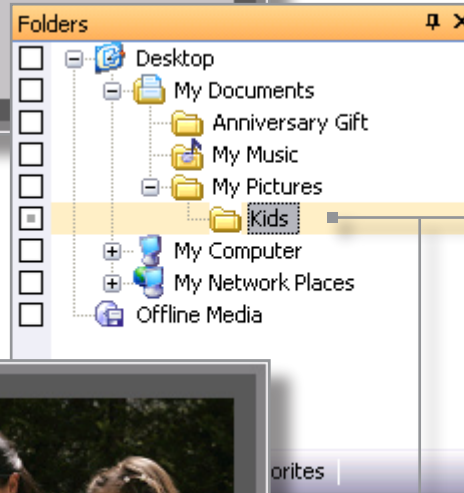
4 Selecting other showroom options

5 Key concepts



When you first open ACDSee Showroom you may see a blank window like the one shown to the left.

The window is blank because you did not select a folder that contains photos before you opened ACDSee Showroom.



However, if you select a folder that contains photos **before** you open ACDSee Showroom, those photos automatically display in the Showroom window.



ACDSee 9 Photo Manager tutorials > Creating a desktop showroom

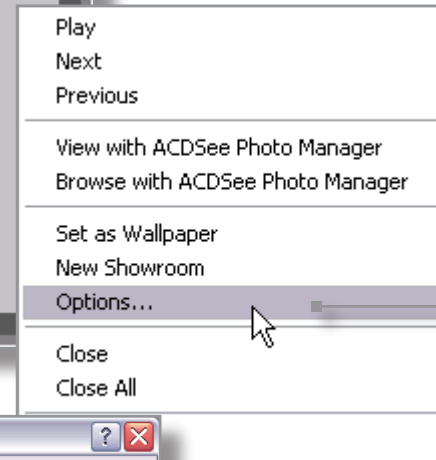
1 What is ACDSee Showroom?

2 Creating a showroom

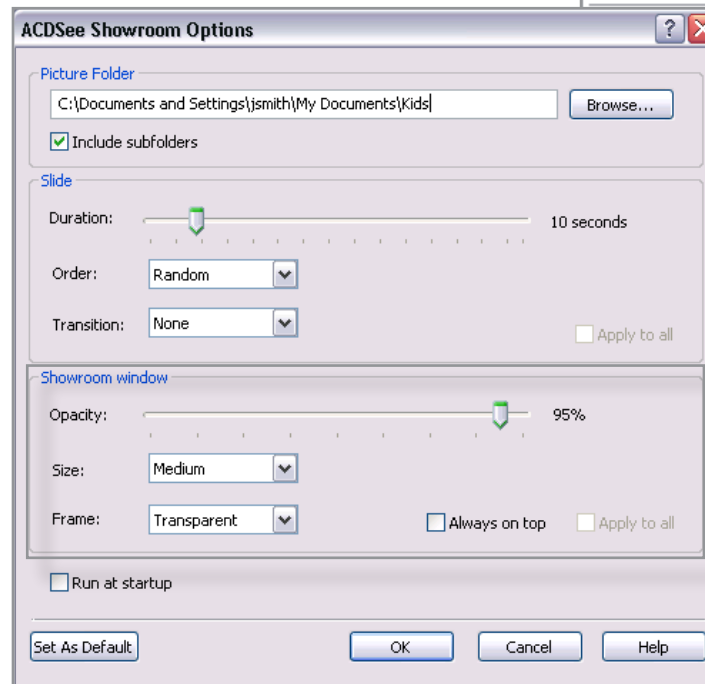
3 Changing the showroom appearance

4 Selecting other showroom options

5 Key concepts



To change the appearance of the Showroom window, right-click the Showroom window and select **Options** from the menu.



You can change the Showroom window opacity, size, frame style, and position.

Drag the **Opacity** slider to the left to decrease opacity and to the right to increase opacity.

Select a small, medium, or large Showroom window size from the **Size** drop-down.

Select a black, green, grey, transparent, or wood frame style from the **Frame** drop-down.

Select **Always on top** to place the Showroom window on top of open windows.

ACDSee 9 Photo Manager tutorials > Creating a desktop showroom

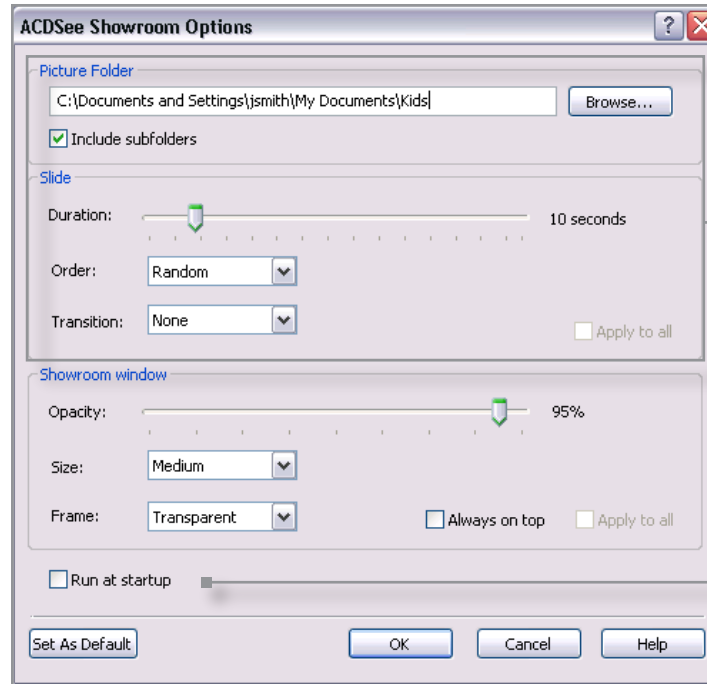
What is ACDSee Showroom?

Creating a showroom

Changing the showroom appearance

Selecting other showroom options

Key concepts



To change the photos that display in the Showroom window, click **Browse** and select a different folder. Select **Include subfolders** to display photos contained in subfolders.

Use the **Duration** slider to determine how long photos display in the Showroom window.

Use the **Order** drop-down to determine if the photos display randomly or sequentially.

Use the **Transition** drop-down to determine if there is no transition between photos, a slide transition, or a fade transition.

If you want to open ACDSee Showroom automatically when you start your computer, select **Run at startup**.

If you see a photo that you really like you can also use the right-click menu options to open it in the ACDSee Viewer or Browser, or to set it as your desktop wallpaper.



1 What is ACDSee Showroom?

2 Creating a showroom

3 Changing the showroom appearance

4 Selecting other showroom options

5 Key concepts

Check to see if you learned these key concepts:

- » ACDSee Showroom is fun widget that you can use to showcase and enjoy your photos.
- » If you select a folder that contains photos before you open ACDSee Showroom, the photos automatically display in the Showroom window.
- » ACDSee Showroom provides numerous options. You can change the ACDSee Showroom window opacity, size, and frame style. You can also control how long each photo displays, the order in which photos display, and the transition between photos.
- » You can also right-click on the ACDSee Showroom window and use the menu options to display photos in the ACDSee Viewer or Browser, set photos as your desktop wallpaper, or open new Showroom windows.

For general inquiries, please contact:

ACD Systems Ltd.
2261-C Keating Cross Road
Victoria, BC Canada
V8M 2A5
p 250.544.6701
f 250.544.0291
www.acdsee.com/support