

# ACDSee Pro 2 tutorials : Moving photos (+ database) to another computer

1 About metadata and the database

2 Exporting the database

3 Moving the files

4 Importing the database

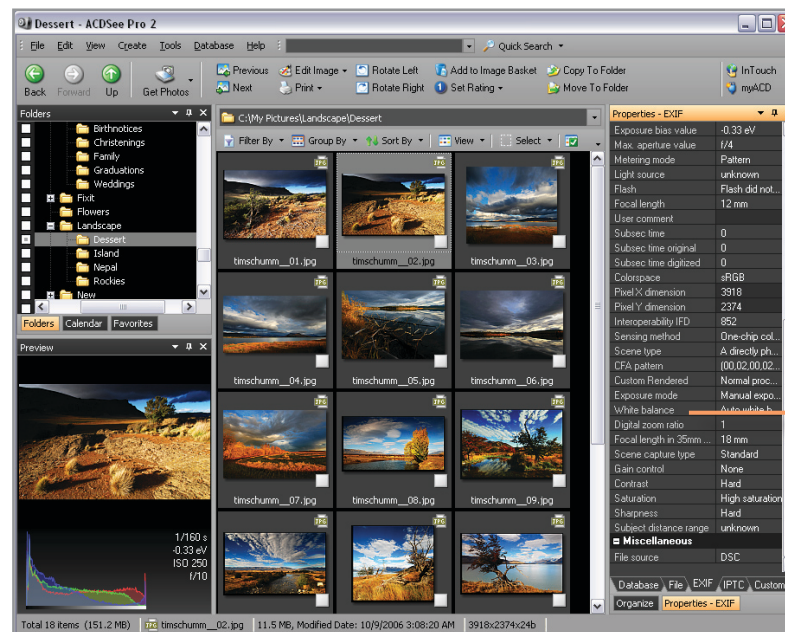
5 Re-establishing links

6 Key concepts

In this lesson, you will learn the most effective way to move photos from one computer to another.

When you move your photos from one computer to another, it is a good idea to move the ACDSee database as well. Moving the database means that you can search photos consistently across computers. Moving the database also means that all the data about your photos, moves too.

To move the database, you export the data to a text file, move the photos and text file to the other computer, import the data into ACDSee on the new computer, and re-establish the links between the photos and data.



Metadata is information about a photo. Your camera settings are metadata. Keywords, captions, ratings, and categories are also metadata.

Camera settings are stored in the photo itself. Other types of metadata (e.g. keywords, captions ratings, and categories) are stored in the ACDSee database.

The camera settings are also copied from the photo to the ACDSee database.

The location of each photo is also stored in the database. If you use ACDSee Pro 2 to move your photos to another folder on your computer, it automatically updates the database with the new location. If you move your photos to another computer, however, the links will be broken unless you move the database too.

# ACDSee Pro 2 tutorials : Moving photos (+ database) to another computer

1 About metadata and the database

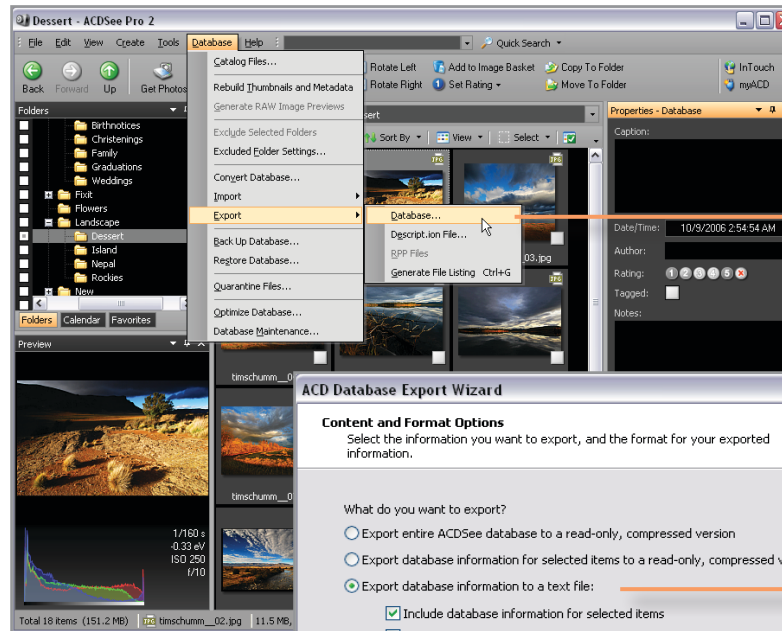
2 Exporting the database

3 Moving the files

4 Importing the database

5 Re-establishing links

6 Key concepts



It is very easy to export metadata from the ACDSee Pro database.:

Click **Database | Export | Database** and use the Database Export Wizard to export the data to a text file.

Indicate that you want to export the data from the database to a text file.



Save the text file in the parent folder of the photos you plan to move to the new computer.

# ACDSee Pro 2 tutorials : Moving photos (+ database) to another computer

1 About metadata and the database

2 Exporting the database

3 Moving the files

4 Importing the database

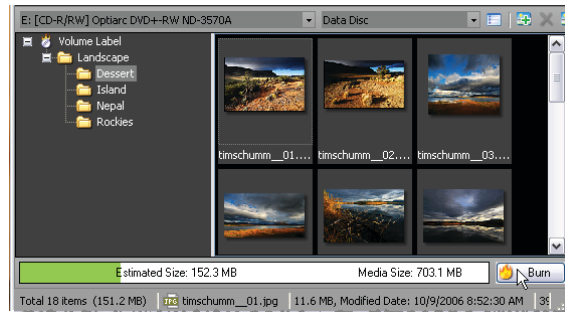
5 Re-establishing links

6 Key concepts

How you move the files depends on whether the computers are networked or not. If the computers are networked, simply use **Edit | Copy To Folder** to move the files to the other computer. If the computers are not networked, you can either use a flash drive to transfer the files, or burn them to a disc.

To burn the files to disc using the Burn Basket Wizard:

1. Click **View | Burn Basket**.
2. Drag the parent folder of the photos to the Burn Basket and click **Burn**.
3. Click **Next**.
4. Select the drive you will use to burn the disc, and the type of disc you are burning.
5. Click **Next**.
6. Click **Finish**.
7. Insert the disc in the other computer.
8. Use ACDSee Pro to copy the folder from the disc to the computer.



The Burn Basket Wizard launches.

# ACDSee Pro 2 tutorials : Moving photos (+ database) to another computer

1 About metadata and the database

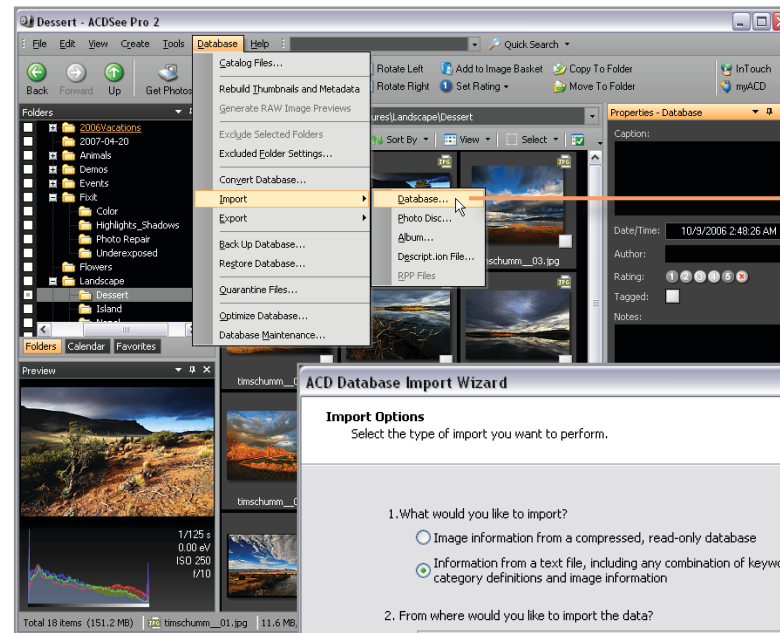
2 Exporting the database

3 Moving the files

4 Importing the database

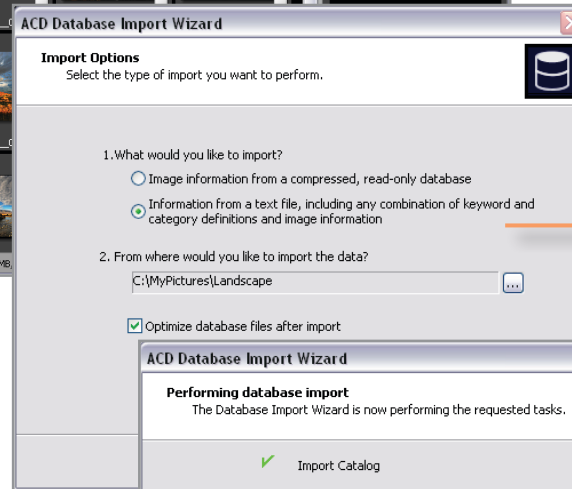
5 Re-establishing links

6 Key concepts



Once the files are on the new computer, you need to import the data from the text file into ACDSee.

Click **Database | Import | Database** and use the Database Import Wizard to import the data in the text file.



Indicate that you want to import the data from a text file, and select the file.

It can take a few seconds to a few minutes to complete the import, depending on the amount of metadata in the text file.

Restart ACDSee Pro 2 when the import is complete.

# ACDSee Pro 2 tutorials : Moving photos (+ database) to another computer

1 About metadata and the database

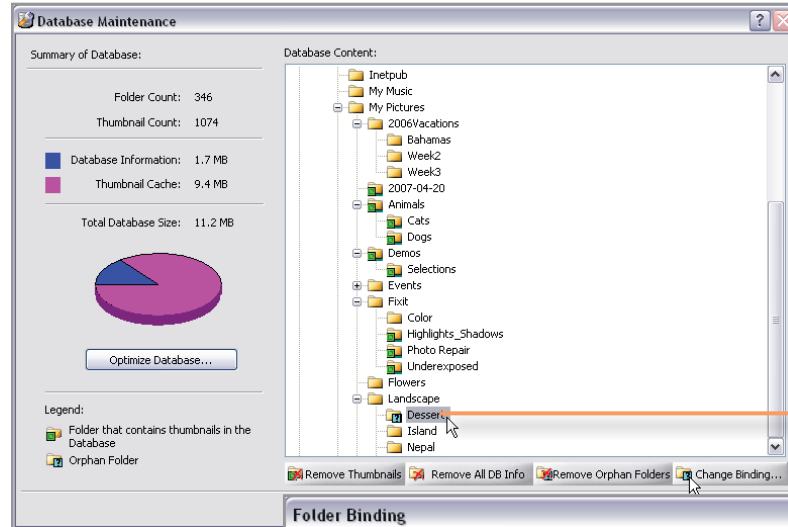
2 Exporting the database

3 Moving the files

4 Importing the database

5 Re-establishing links

6 Key concepts

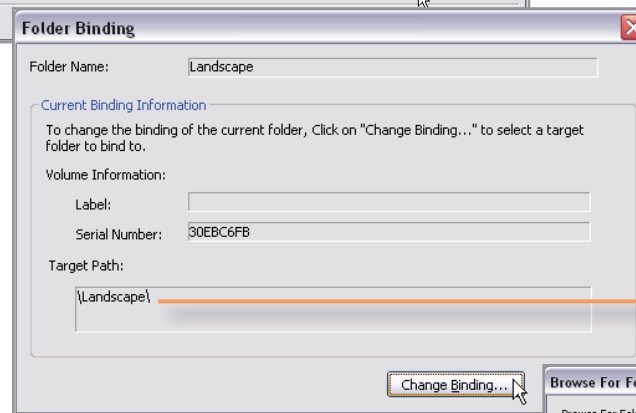


Now you need to re-establish the links between the photos and data from the text file:

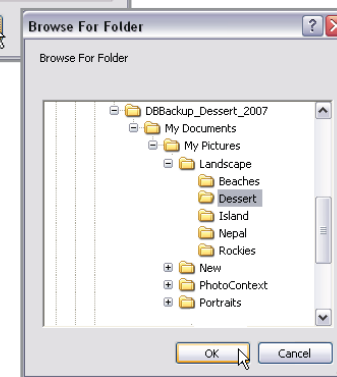
Click **Database | Database Maintenance**, then expand the file tree.

The folder icons in the old file path have a green square with a question mark in them. This indicates that the links are broken.

Select the parent folder in the old file path, then click **Change Binding**.



In the Folder Binding dialog you will see the old file path to the photos. Click **Change Binding** to change the links from the old file path to the new file path.



In the Browser for Folder dialog select the new file path and click **OK**.

Restart ACDSee Pro 2 when the links are updated.

# ACDSee Pro 2 tutorials : Moving photos (+ database) to another computer

1 About metadata and the database

2 Exporting the database

3 Moving the files

4 Importing the database

5 Re-establishing links

6 Key concepts

It only takes a few minutes, but it is worth the time because now you can search for photos on the new computer based on ratings and categories, as well as EXIF, IPTC, and file information.

## Check to see if you learned these key concepts:

- ◆ Metadata is information about a photo such as the date it was taken, the camera settings used, keywords, or captions. Ratings and categories are also metadata. All of these are stored in the ACDSee database.
- ◆ It is not possible to add metadata to most image files, so additional metadata must be stored in the ACDSee Pro database.
- ◆ If you move your photos to another computer, you should move the metadata as well. You can do this by exporting the metadata to a text file, moving the photos and text file to the other computer, importing the text file, and re-establishing the links between the photos and metadata.

## For general inquiries, please contact:

ACDSystems International Inc.  
200-1312 Blanchard Street  
Victoria, BC, Canada  
V8W 2J1  
p 250-419-6700  
f 250-419-6745  
[www.acdsee.com/support](http://www.acdsee.com/support)