

ACDSee Pro 3 tutorials: Creating and applying presets to multiple images

1 Opening an image

2 Creating a preset

3 Selecting images

4 Applying a preset

5 Key concepts

Presets contain saved Develop settings and allow you to quickly apply these settings to images without having to repeat the steps each time you want to apply the same image adjustment. For example, if you convert your landscape images to black and white, you can save this setting as a preset and quickly apply it and ensure that adjustments are applied consistently to your images. Presets are a time-saver for Pros who shoot in burst mode or in studio conditions and need to apply the same settings from one image to another. There are many ways to access presets and apply them. This tutorial covers creating a preset and applying them to a batch of images in Manage mode.

Select an image in Manage mode, then click **Process**.



ACDSee Pro 3 tutorials: Creating and applying presets to multiple images

1 Opening an image

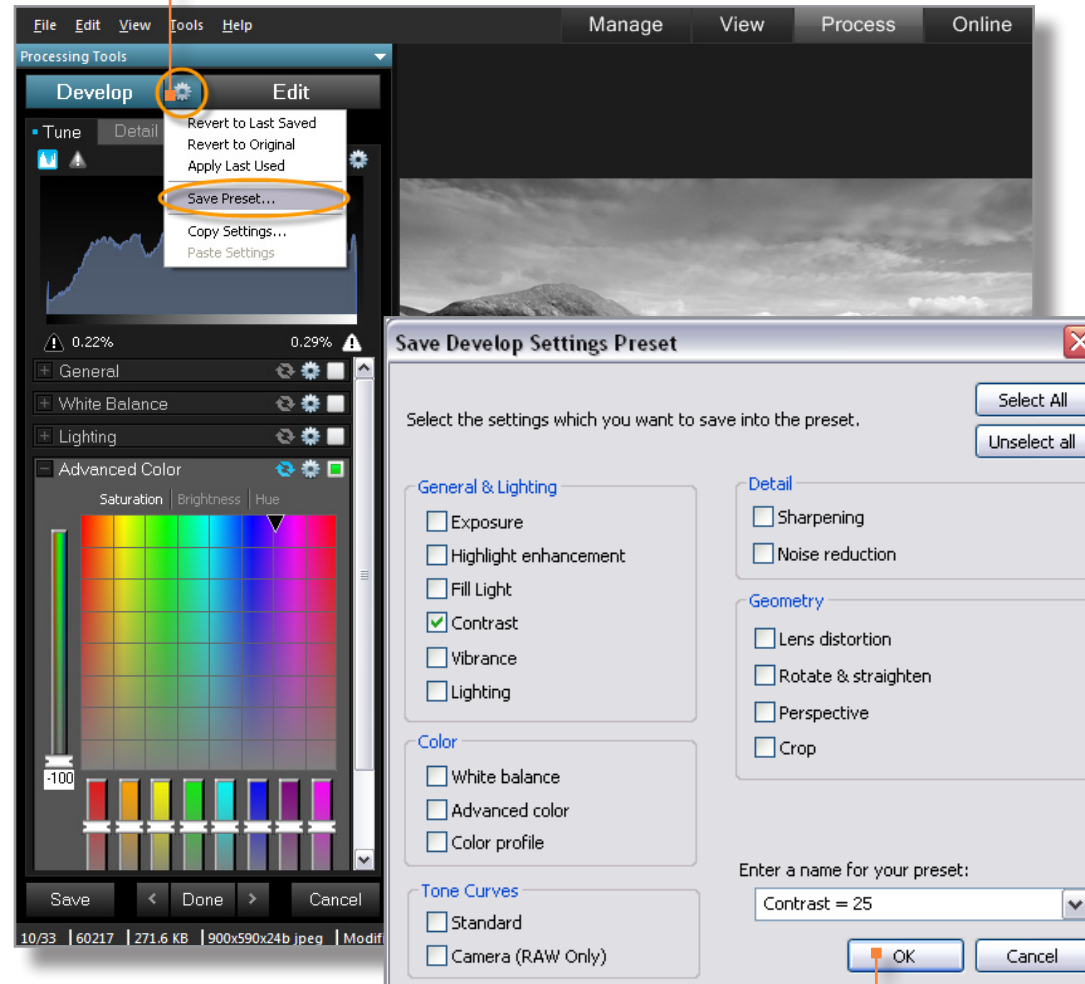
2 Creating a preset

3 Selecting images

4 Applying a preset

5 Key concepts

Make adjustments to your image, then click the Develop settings icon and select **Save Preset**.



Select the Develop settings you want to add to the preset. Enter a name for the preset and click **OK**.

ACDSee Pro 3 tutorials: Creating and applying presets to multiple images

Opening an image

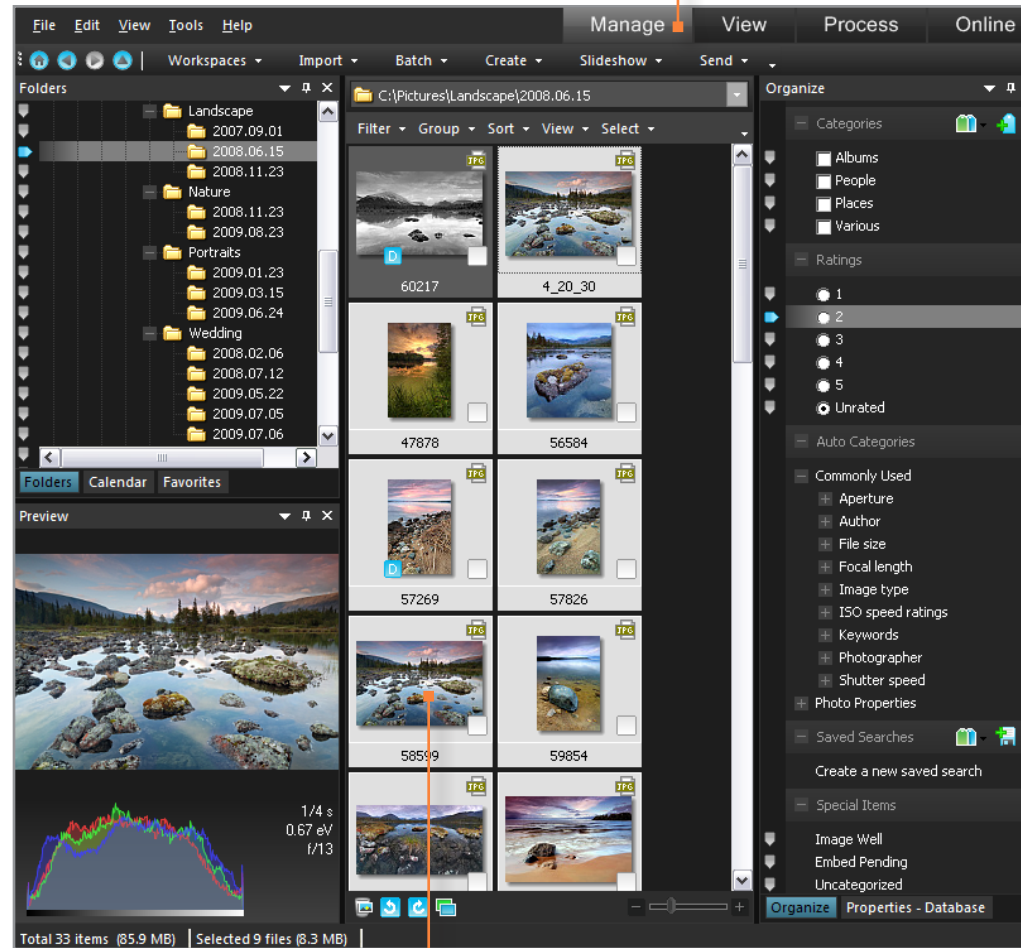
Creating a preset

Selecting images

Applying a preset

Key concepts

Click **Manage**.



Select the images you want to apply the new preset to.

ACDSee Pro 3 tutorials: Creating and applying presets to multiple images

Opening an image

Right-click on the selected images. In the menu, select **Process | Apply Preset**. Select the preset you want to apply to your images.

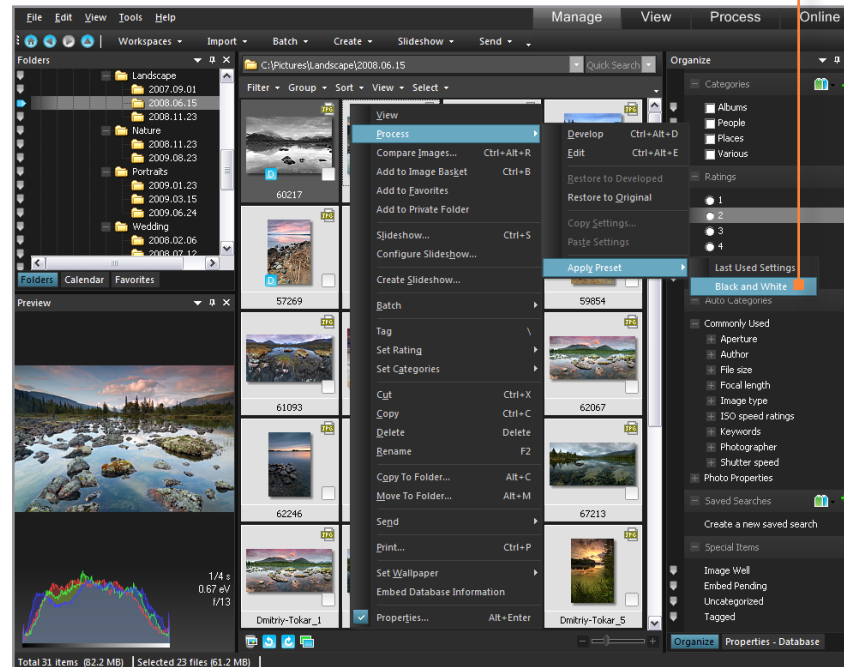
Creating a preset

ACDSee Pro automatically applies the preset to your images, and the thumbnails are updated to reflect the new adjustments.

Selecting images

Applying a preset

Key concepts



You can always take the image back into Process mode to further process the image. If you want to discard the changes you made to your images, simply select the images in Manage mode, and select **Tools | Process | Restore to Original**.

ACDSee Pro 3 tutorials: Creating and applying presets to multiple images

1
Opening an image

2
Creating a preset

3
Selecting images

4
Applying a preset

5
Key concepts

Check to see if you learned these key concepts:

- » Presets allow you to quickly apply changes to an image without having to repeat the steps each time you want to apply the same change. Presets help to ensure that settings are applied consistently in your images.
- » A preset can contain multiple or single Develop settings.
- » You can apply as many presets as you want to an image. Each time you add a preset, the settings are applied on top of the previous settings.
- » You can apply a preset to multiple images in Manage mode.
- » Presets can only be created in Develop.
- » You can apply presets in Manage, View, and Process mode. There is more information in the Help in the Process mode | Developing | Working in the Develop pane | Using presets in Develop topic.