

IMPORTING AND EXPORTING AutoCAD FILES (DWG)

In addition to Canvas' numerous import and export capabilities, you can also import AutoCAD 2007 files into Canvas 11, edit them, and export to PDF format.

Objectives

After this exercise you will be able to:

- » Import a DWG file
- » Export as PDF
- » Add symbols to a document
- » Create dimensions

Required knowledge to perform this exercise:

- » Open or place files
- » Move an object
- » Draw or place an object
- » Understand the use of dimensions in CAD design

STEP 1: IMPORTING DWG FILES

First choose File > Open and select DWG for Files of type. Click Open and the DWG & DXF Import dialog box opens. The first going to Open and select the DWG file, but first on Files of type select DWG - AutoCAD® native files, then a new palette window call DWG & DXF Import will open.

DWG - AutoCAD® native files

DWF - Design Web Format™ (WHIP!)

DWG - AutoCAD® native files

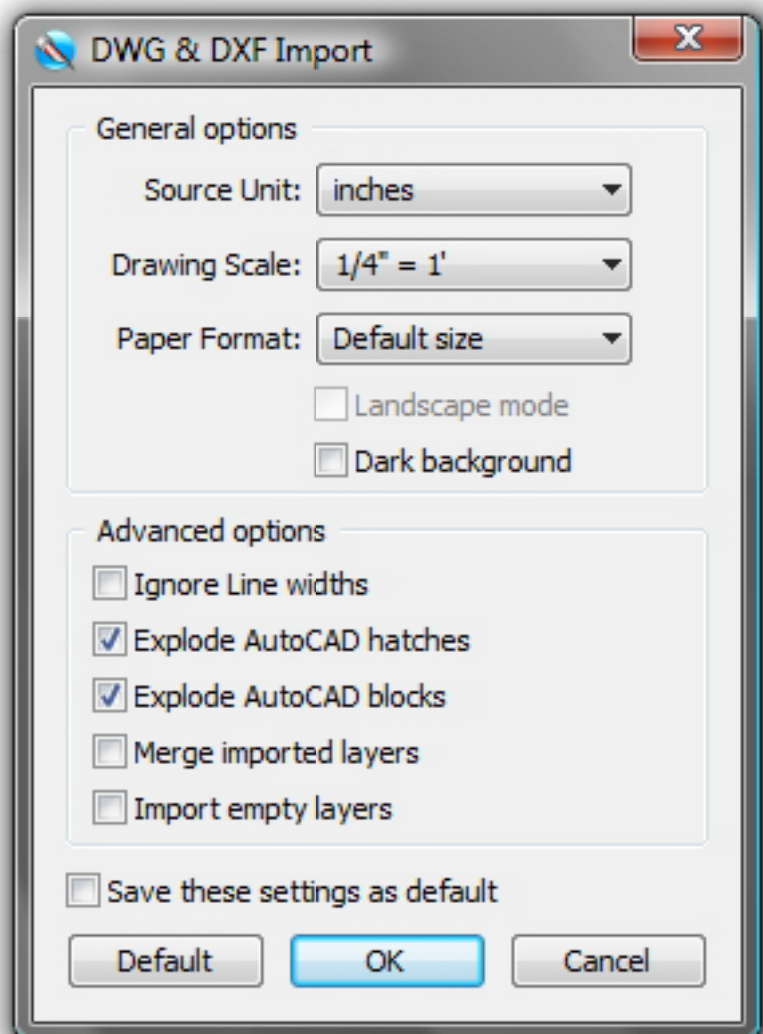
DXF - AutoCAD® drawing interchange

E00 - Arc/Info Text Coverage

ECW - ECW files

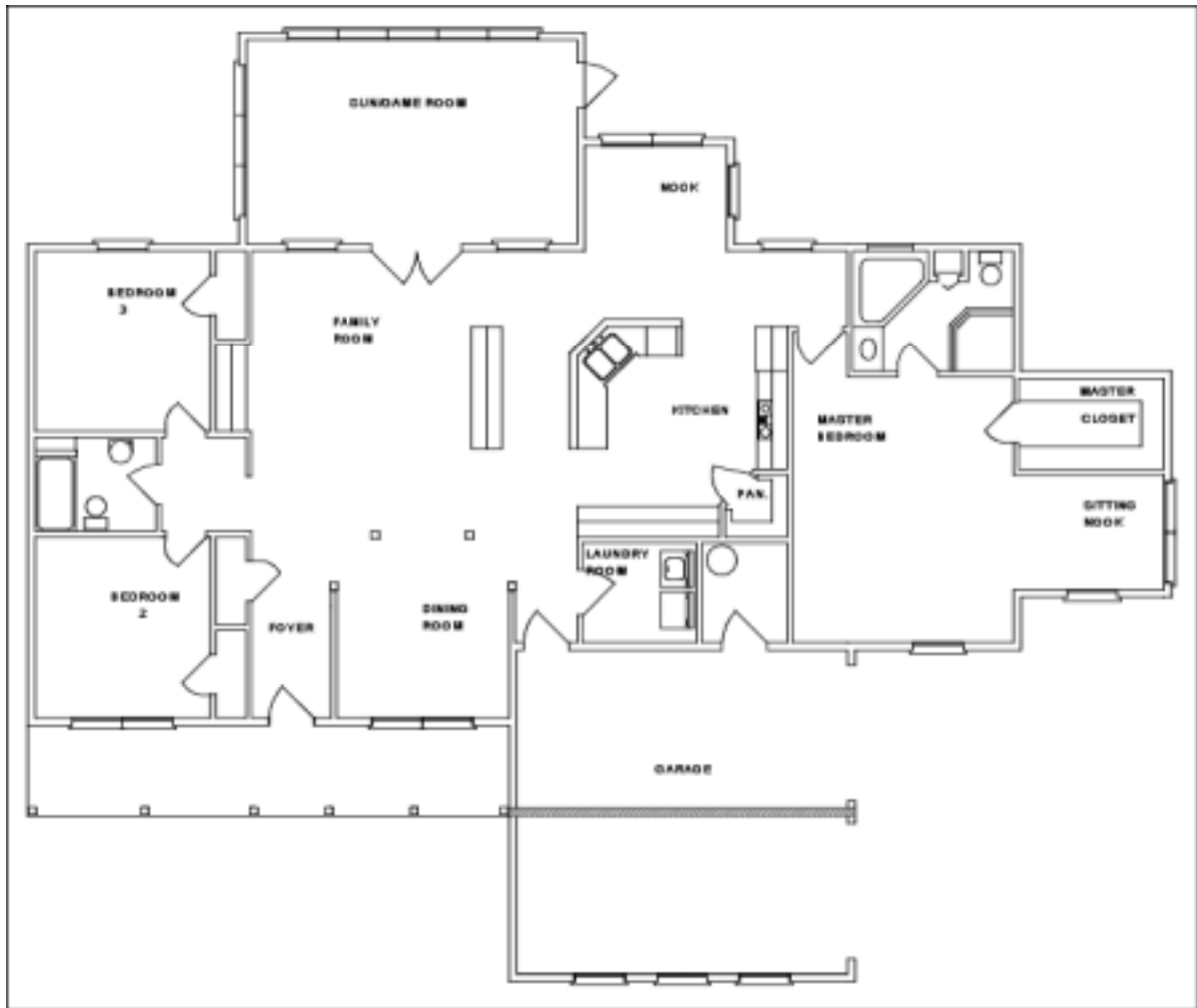
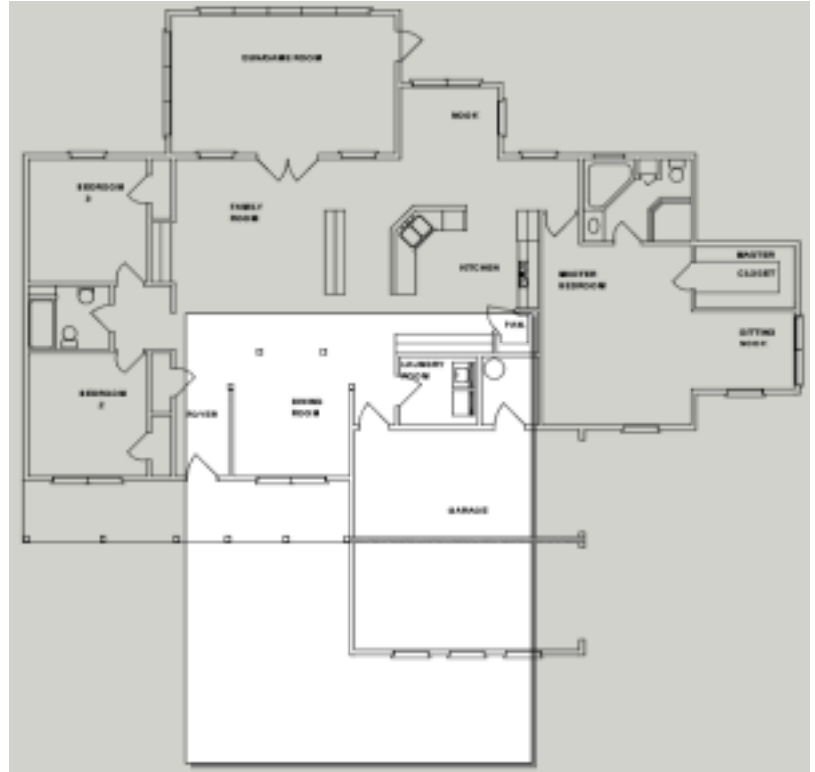
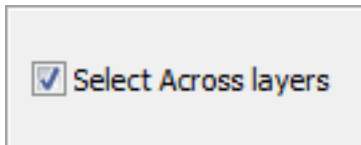
A common scale used in CAD drawing is 1/4"=1', so we need to setup at this scale.

Note: If you don't want to set the drawing scale upon import, you can also use Canvas' various scaling methods after import.

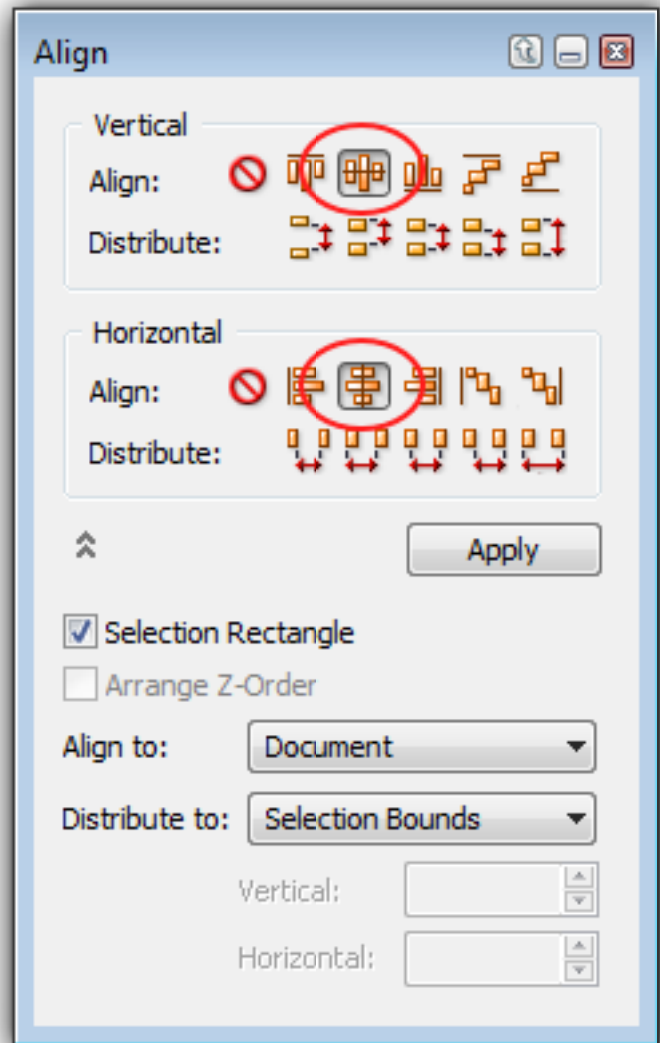


After opening the DWG file, notice that the drawing is larger than the document size. Change the document size to 950 in x 800 in, so the drawing will be able to fit within the boundary.

Now the drawing has to be moved within the boundary. The drawing has multiple layers and all the layers have to be selected at the same time so they can be moved together to the center of the document. To do so, click the Select Across Layers checkbox in the Properties bar. Press Ctrl+A to select everything on each layer and then create a group.



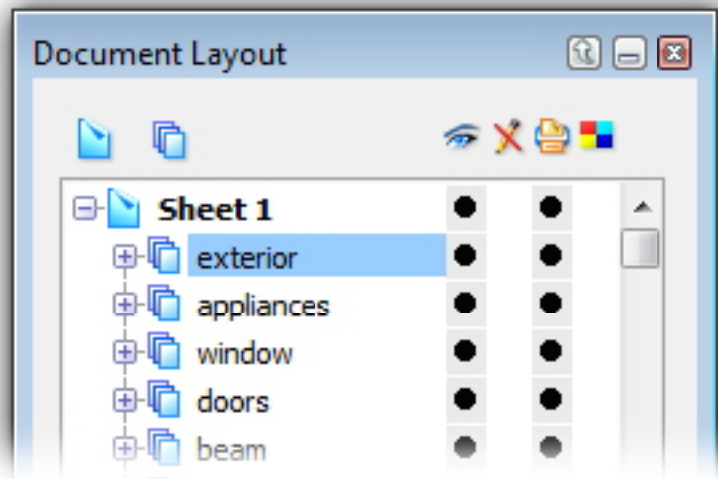
Now with the Align palette, choose to align the group to the center of document, horizontally and vertically.

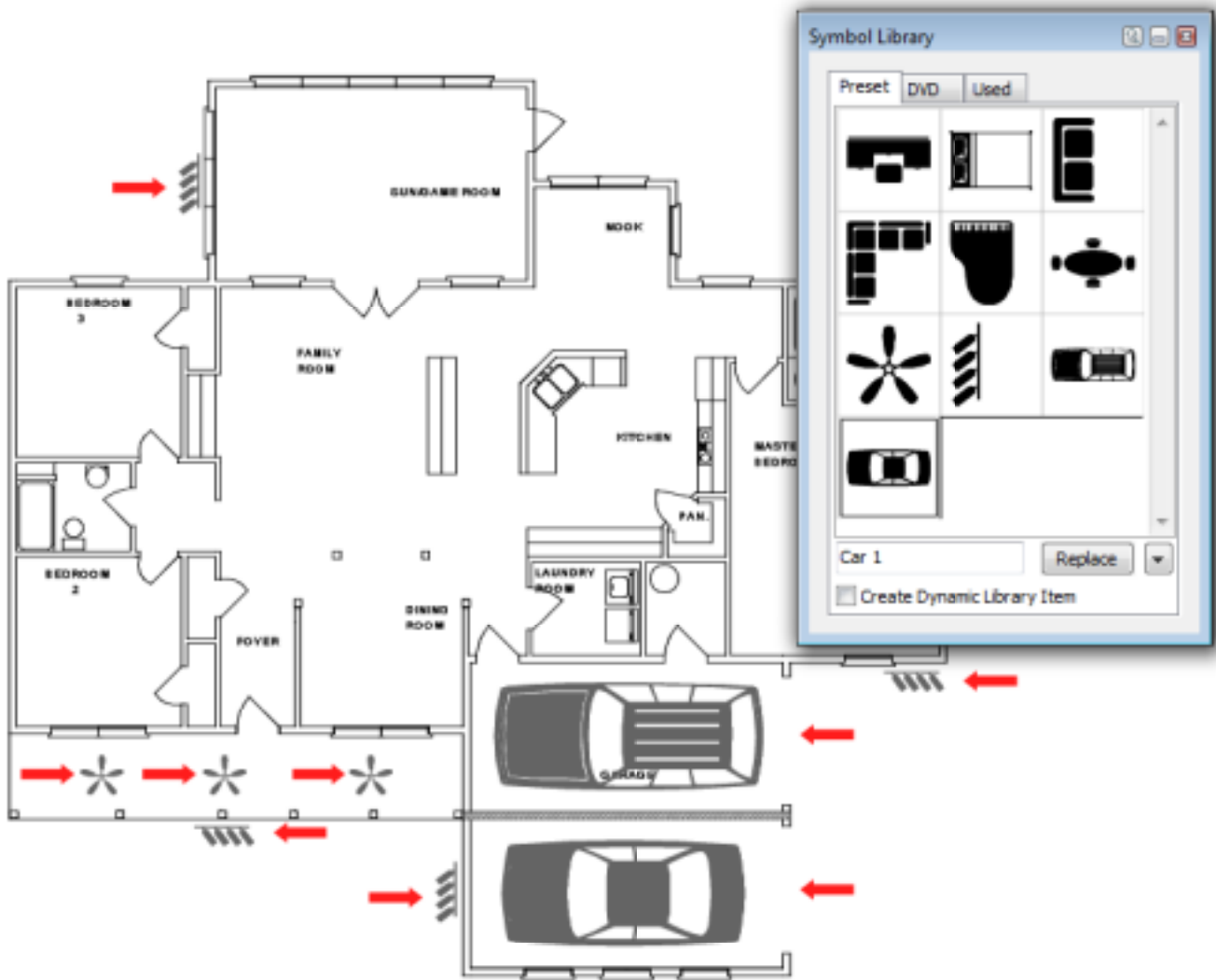


STEP 2: ADDING HOME SYMBOLS

First open the Document Layout palette to add a new layer section call "exterior". In this layer we going to add all the symbols that go outside the house, like a car, fans, lamps, etc..

To open the Symbol Library palette, choose Windows > Palettes > Symbol Library.



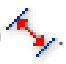


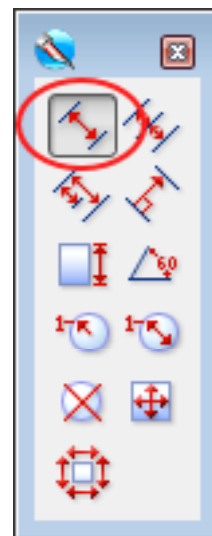
Then create a new layer for "interior" and dimensions using the previous steps.

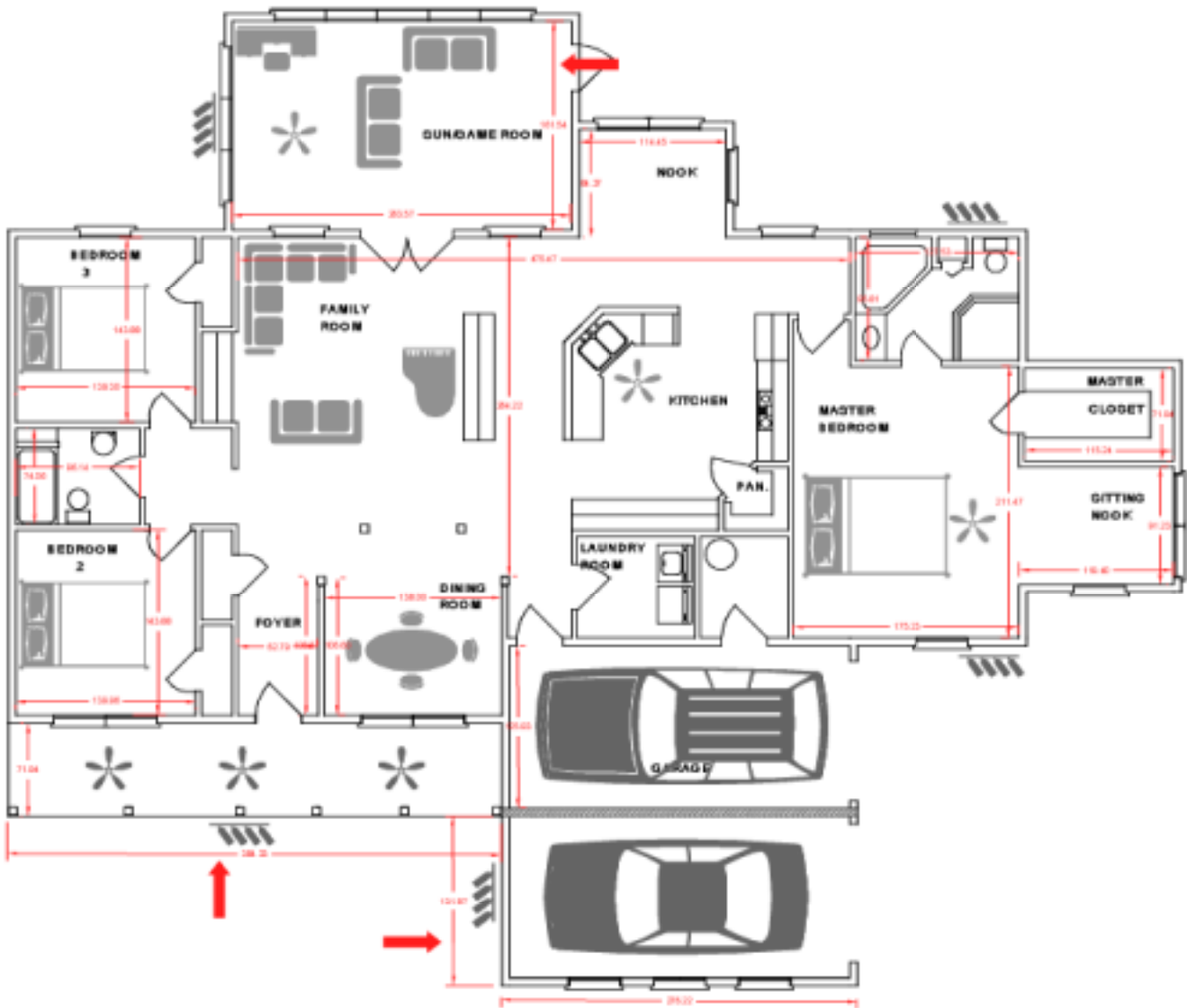
STEP 3: ADDING DIMENSIONS

Every CAD drawing needs dimensions. In this step, we'll add some dimensions in various areas of the drawing. The dimensions will have a red stroke and red text to make them stand out.

Note: With the Dimensioning tools you can easily add formatted dimensions to drawings. These tools can measure horizontal, vertical, oblique and perpendicular distances; measure diameter, radius, angle, and perimeter; and mark the centers of arc and ovals.

On the Toolbox click the Dimension icon (linear) . To use a Dimensioning tool, click once to begin the measurement. Then click again to anchor the dimension.





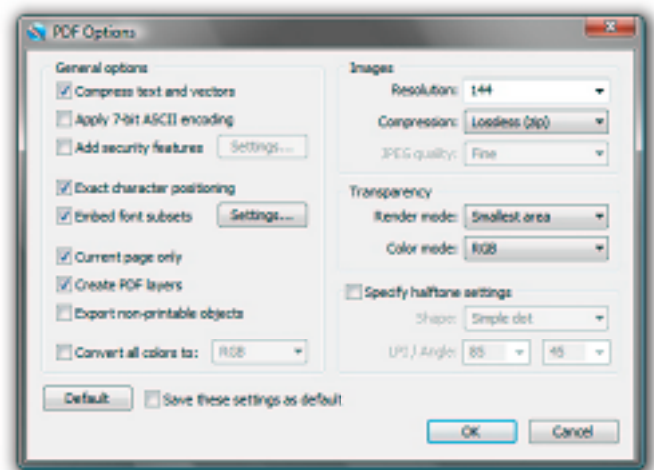
STEP 4: EXPORTING TO PDF

Now that we have the drawing with the dimensions and some symbols, let's export to PDF (Portable Document File). Choose File > Save As to open the Save dialog box. Select PDF - Acrobat® files as the format. The PDF Option dialog box opens.

- PCX - PCX
- PDF - Acrobat® files
- PNG - Geo PNG
- PNG - Portable Network Graphics

For printing, it's best to set the resolution between 144 and 300. If you only intend to send the drawing by email or perhaps display it on the Web, then set the resolution to 72.

You can refer to the settings on the right.



The final DWG drawing imported and modified in Canvas 11 is shown below.

