



Corporate Flow



Illustration



Image Editing



Automation



Web



Text Effects

# Canvas Tips and Techniques



Copyright © 1995-2005  
ACD Systems of America, Inc.

Protected by the copyright laws  
of United States and Canada  
and by international treaties.

## Using Clipping Paths



**Learn How to Easily Create Exciting New Images by using Clipping Paths in this Canvas Tutorial.**

You have probably seen the Clipping Path effect being used in numerous print and web designs. This effect is easier to create than you might think. This tutorial will show you just how easy it is to incorporate this exciting design effect in your next graphics project. Before you begin there are a few things that you should keep in mind.

A clipping path is a special object that creates a frame or window on an object. Remember, you can use either text or a vector object as a clipping path. Also, you can apply a clipping path to one or more object at the same time. The clipping path frames the object that it is applied to. Anything inside the clipping path will remain visible, while everything outside the path is hidden or "clipped".

For example, If you apply a oval clipping path to a photo, the image will be visible inside the oval. Everything that is "left over," or outside the oval "frame" will disappear. The popularity of the clipping path effect is also due to the fact that clipping paths are vector objects. This means that the clipping effects will print smoothly at maximum resolution on your Postscript or non-PostScript printer.

Clipping paths create visually pleasing hard-edged effects which are often used to "cut" photos and illustrations into shape such as circles or curves. In this example we have used text as a clipping path to create the effect of text characters filled with photos or other graphics.

Once you have completed this tutorial a few times we suggest that you try applying this cool design to other vector objects. Take a look at Clip Art library that was included with Canvas and experiment with a few of them. After doing so a few time you will see how easy it is to add this effect to your next project. Enjoy!

### **Step 1**

First we will type the text we want to use as a clipping path. For this example, we chose the font Impact and set the type size to 70 points.

**Tip:** Choose a font that will allow more of the "clipped" image to show through. Examine the fonts that are included inside the Canvas Clip Art manual and, if needed, install them. You can locate instructions on how to install fonts inside the Canvas Users Guide.



## Using Clipping Paths (Continued)

### Step 2

#### Preparing the Image

Next, choose an image that reflects the feeling which you want to convey. In this example, we want to express the feeling of a lazy afternoon on a sunny Hawaiian island resort.

**Tip:** You may want to reduce the size of your image. Doing so will allow you to place more of the image inside of the clipping path. In this example we reduced the width of the image from 720 to 240 pixels.

To do this simply select the image and enter the desired settings in the Image Resolution Palette (Image>Area>Resolution). Make sure Preserve Proportions is checked, see below.



### Step 3

#### Arranging the Layers

Now place the text over the image. If your text is located behind the photo, you can move it to the front. To do this, first, select the text and from the main menu, choose Object>Arrange>Bring to Front.



## Using Clipping Paths (Continued)

### Step 4

#### Selecting the Layers

Next we need to select both the text and the image. This is easily accomplished by selecting the background image and simultaneously holding down the shift key while selecting the text. The selected objects should look like the example on the right.

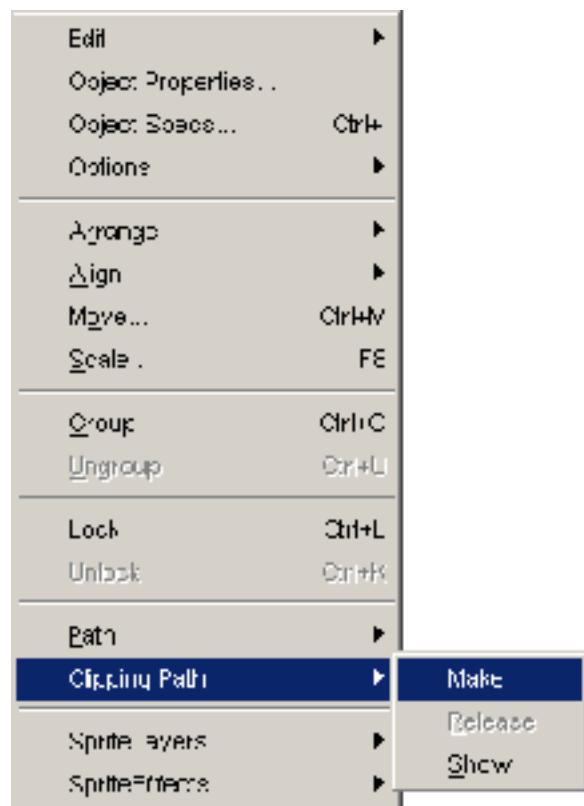


### Step 5

#### Creating the Clipping Path

With both images still selected choose Object>Clipping Path>Make from the Menu Bar.

At this point it may be a good idea to group (Windows: Ctrl+G, Mac: Command+G) the items to keep them from losing their place.



# Using Clipping Paths (Continued)

## Step 6

### Smoothing the Text

Your resulting image at this point will look like the example on the right. Note that the Hawaiian backdrop is now visible through the text. However you probably have noticed that the edges of the text appear to be a little jagged.



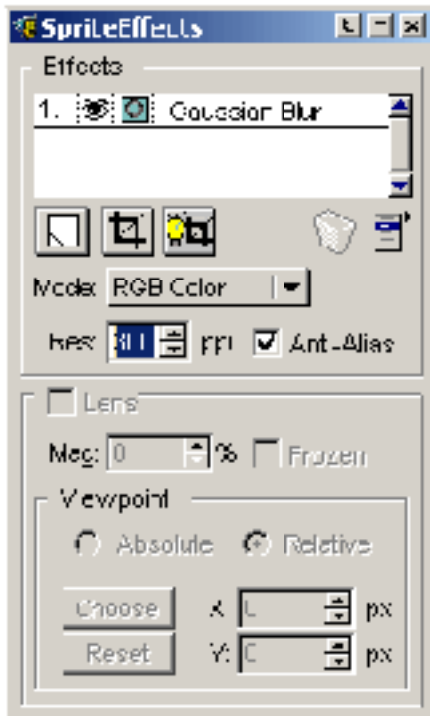
To fix this select the grouped objects and add a Gaussian Blur (Object>SpriteEffects>Add Effect>Blur>Gaussian Blur) with a value of 1.



Next, with the objects still selected, open the SpriteEffect Palette (Objects>SpriteEffects>Show Palette) and change the Resolution to 300 ppi Also make sure that the Anti-Alias box is checked. (See below.)



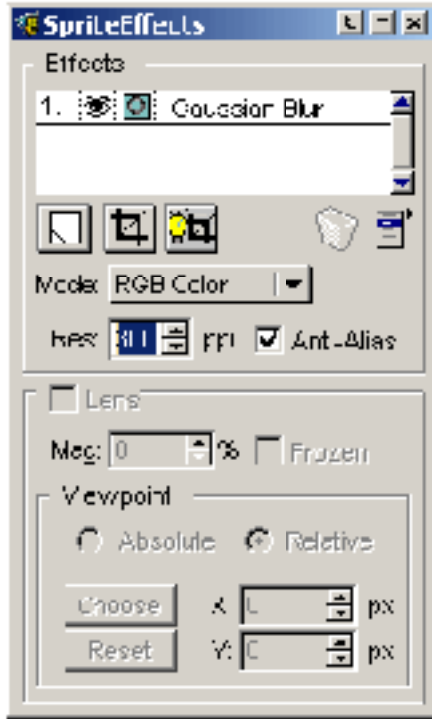
You will now notice that the resulting image, shown here on the right, will now have acceptably smooth edges.



## Using Clipping Paths (Continued)

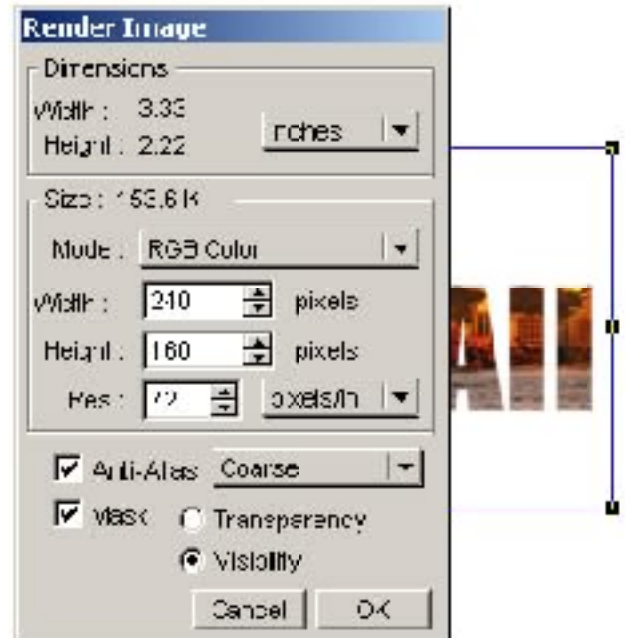
Next, with the objects still selected, open the SpriteEffect Palette (Objects>SpriteEffects>Show Palette) and change the Resolution to 300 ppi Also make sure that the Anti-Alias box is checked. (See below.)

You will now notice that the resulting image, shown here on the right, will now have acceptably smooth edges.



Now, if you wish, you can add more effects to your work. To do this you will need to begin by rendering the objects with a visibility mask.

To begin, select the objects and choose the command: Image>Area>Render from the Menu Bar. Be certain to check the Anti-Alias box and select: Coarse. Also, select Mask is check and Visibility. Then click the OK button.



Your resulting image will now have a transparent background.

This simple procedure will allow you to apply other image filters such as Bevel or Shadow.



## Using Clipping Paths (Continued)

Next, let's create a nice design that can be used for a post card or a brochure project. In this example we will be using a clipping path to create the effect of an oval cropped picture.

### Step 1

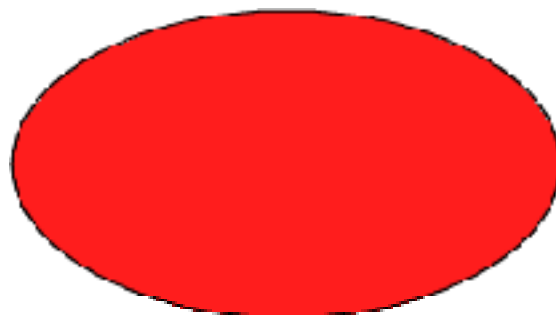
#### Choosing an Image

Our design project needs to reflect a Caribbean atmosphere. We chose this image because it contains strong colors and will work well with our design.



### Step 2

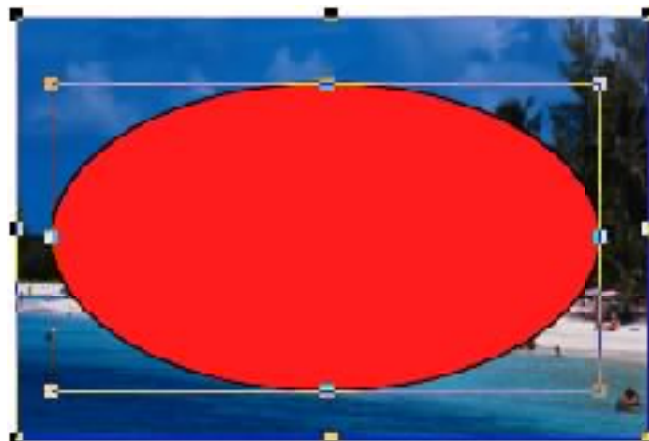
Next choose the Oval Tool from the Toolbox (see below) and create an oval that will become the clipping path.



### Step 3

#### Align the Objects

Now place the oval object over the image of the beach and select them both.



## Using Clipping Paths (Continued)

### Step 3

#### Creating the Clipping Path

With both images selected choose Object>Clipping Path>Make from the Menu Bar. (see below) The image should now look like the example on the right.

Next, group (Windows: Ctrl+G, Mac: Command+G) the objects to keep them from losing their place and you are done.

