

# Welcome!

## Gather what you need

## Create the card workarea

## Add and resize the background

## Place, resize, and frame the photo

## Align, group, and rotate the picture

## Arrange ribbons and flower

## Add and color text

## Add finishing touches

Welcome! We hope you enjoy our tutorial on how to create a valentine card.

The elements we used come from a lovely original kit by Vicki Stegall, whose other great kits can be found at <http://www.oscraps.com/index.html>. The card itself was designed by Marc Johns our graphic designer and the tutorial written by Sue Andrews our technical writer.



### What you will need:

A photo or picture to use on the card. If you are going to stick quite closely to our design, select a close-up with the faces in the center of the photo. If your photo is landscape - wider than it is long - like the one we chose, it will work better.

# ACDSee 9 Photo Editor tutorials > Creating a valentine card

Welcome!

Gather what you need

Create the card workarea

Add and resize the background

Place, resize, and frame the photo

Align, group, and rotate the picture

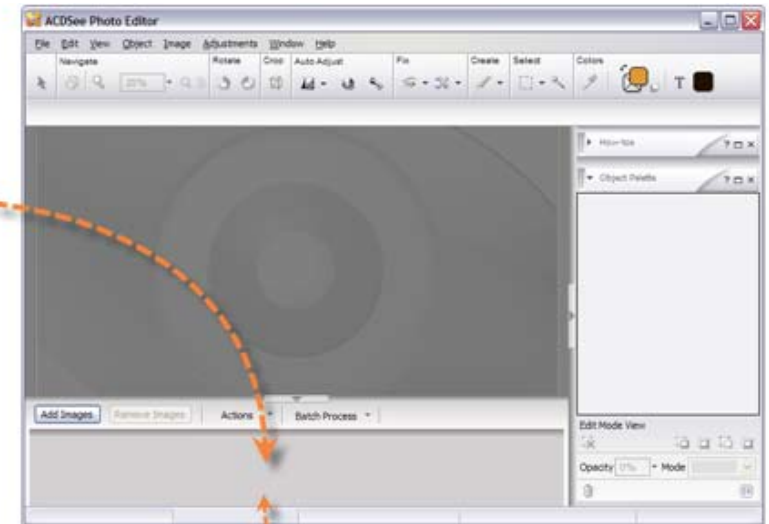
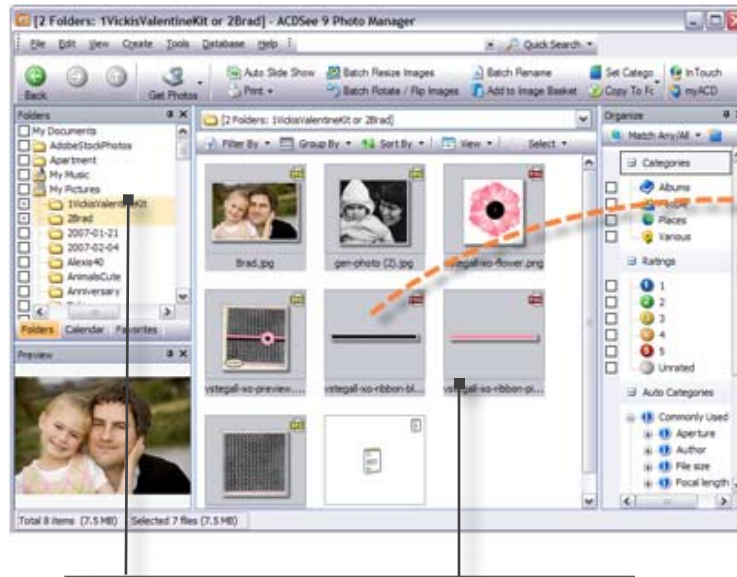
Arrange ribbons and flower

Add and color text

Add finishing touches

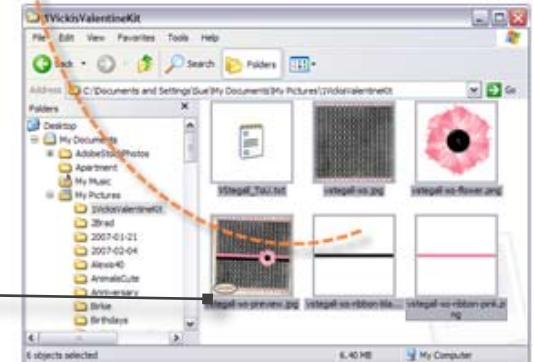
We find it easier to gather all the elements into the Photo Editor Image Basket first. That way you have all your elements at your fingertips while you work.

You can click the **Add Images** button and then find the images to add, but it's a lot easier to just drag elements into the Image Basket from either Windows Explorer, or ACDSee Photo Manager. Using ACDSee Photo Manager is easier because you can quickly display elements from several folders in the File List, and then pick and choose the ones you want to drag into the Image Basket.



In ACDSee, you can click the squares at the side of the Folders pane to show elements in more than one folder at a time. Then press Shift + click to select the ones you want and drag them into the Image Basket.

With Windows Explorer, you can also Shift+ click to select and drag your elements, but you can only do this one folder at a time.



# ACDSee Photo Editor

# ACDSee 9 Photo Editor tutorials > Creating a valentine card

Welcome!

Gather what you need

Create the card workarea

Add and resize the background

Place, resize, and frame the photo

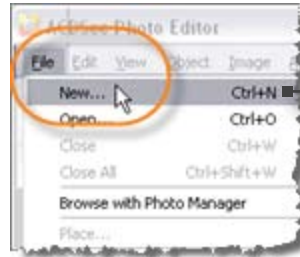
Align, group, and rotate the picture

Arrange ribbons and flower

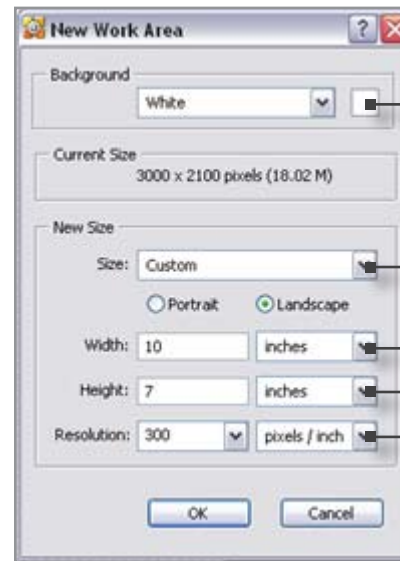
Add and color text

Add finishing touches

The next step is to create a work area the same size as the final card, mark the fold line and bring in the background.



Click **File** | **New** (or press Ctrl + N) to open the New Work Area dialog.



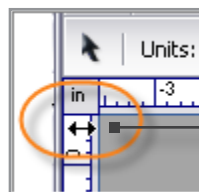
Select **White** as the background color.

Select **Custom** for the size as you want to enter exact measurements for your card..

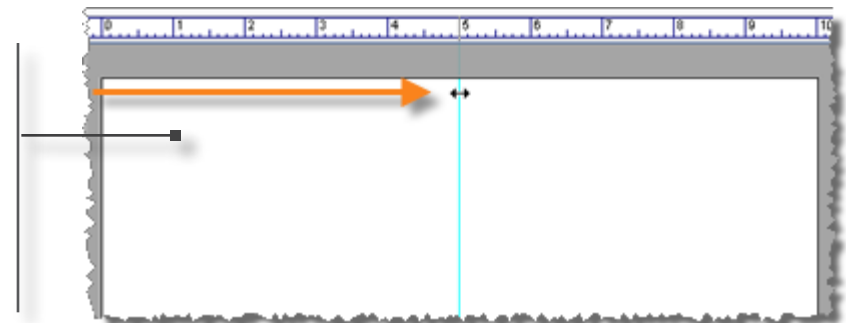
Type in **10** inches for the width (25.4 cm) and **7** inches (17.78 cm) for the height.

Set the Resolution to **300** pixels per inch, which is best for high-quality printing (118 pixels/cm).

A white work area appears that is the exact size of your finished card. Having your work area the same size as your finished project, makes it easier to judge proportions. In Photo Editor, only elements you place inside this work area are printed. This means that you can place elements in the grey area around it while you are working but they won't be visible once you print.



To use a guide to mark the fold of your card, hover your cursor over the ruler on the left side of the window, until the double arrow appears, then click and drag the turquoise line to the 5-inch mark on the top ruler.



# ACDSee 9 Photo Editor tutorials > Creating a valentine card

Welcome!

Gather what you need

Create the card workarea

Add and resize the background

Place, resize, and frame the photo

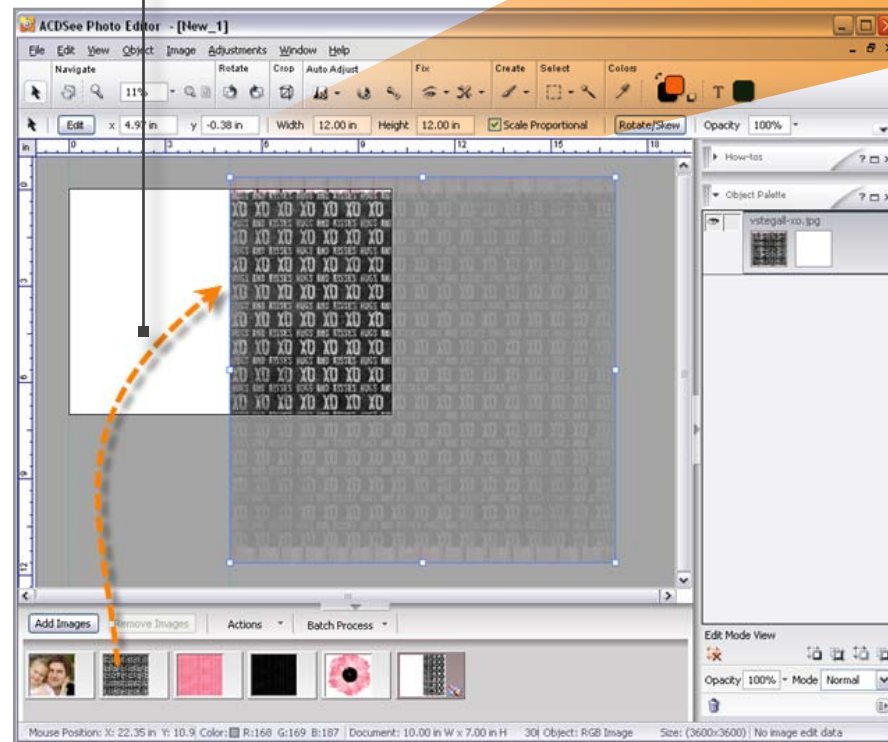
Align, group, and rotate the picture

Arrange ribbons and flower

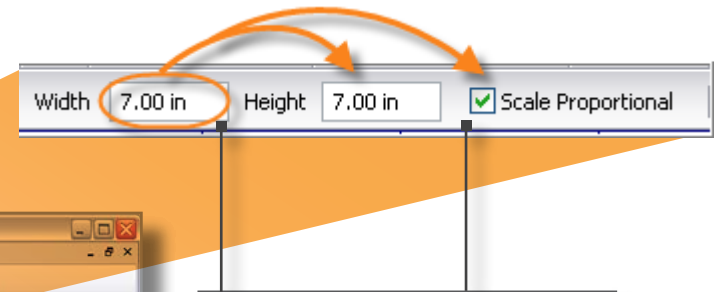
Add and color text

Add finishing touches

Drag the background image from the Image Basket onto your new blank work area so that it covers what will be the front of the card.





If you see this warning, click **OK**.



With the background still selected, in the **Width** field, replace the 12.00 in with **7.00 in** (17.78 cm) to reduce the size of the background. You will see that the height changes automatically because Scale Proportional is selected.

When your background has resized, re-position it so that the pink border is showing at the top and bottom. Don't worry about the back of the card, we will fix that later. .

 **Tips:** To move your card around within the work area, press the space bar. When your cursor changes to a hand shape,  drag the card into position.

When you are working with large files like backgrounds or papers, zoom right out to 11 - or 12%. It makes it easier to see what is happening.



# ACDSee 9 Photo Editor tutorials > Creating a valentine card

Welcome!

Gather what you need

Create the card workarea

Add and resize the background

Place, resize, and frame the photo

Align, group, and rotate the picture

Arrange ribbons and flower

Add and color text

Add finishing touches

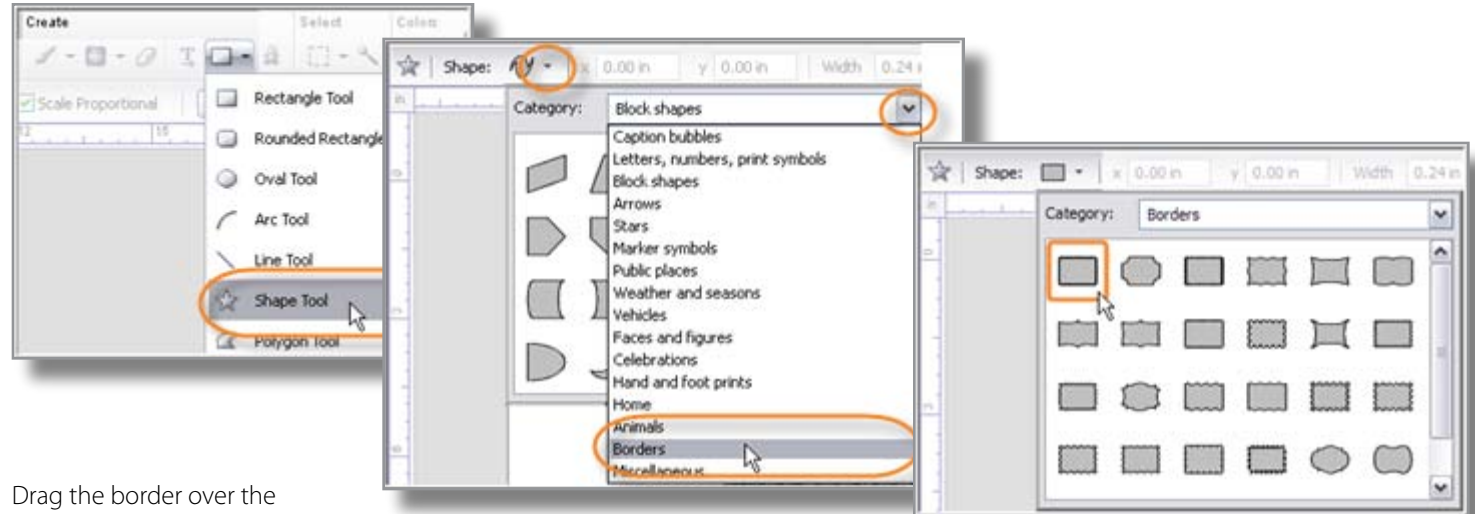
Drag your photo from the Image Basket onto the card. Before you deselect it, resize it the same way you did the background, by typing **4.5** into the **Width** field. Your photo should now be just smaller than the front of the card.

Now we are going to create the white border with cut-out edge.

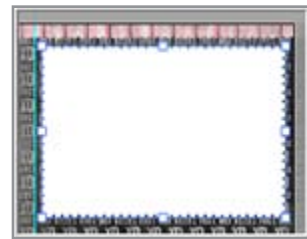
In the Colors section of the toolbar, double-click the top square of the Color Picker and select white.



From the Create section of the toolbar, select the **Shape** tool, and then click the down arrow on the Properties bar and choose the Borders category. Select the very first Border shape in the top left corner. This border has a rough edge like a postage stamp.

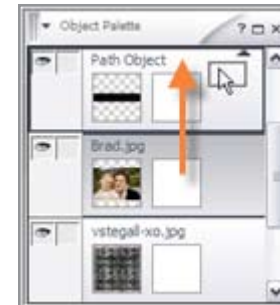


Drag the border over the photo so there is just a small edge overlapping each side.



The easiest way to bring the photo in front of the border, is to drag it to the top of the objects in the Object Palette.

Now the photo looks like a postage stamp!



# ACDSee Photo Editor

 **acdsee**  
Photo Editor

# ACDSee 9 Photo Editor tutorials > Creating a valentine card

Welcome!

Gather what you need

Create the card workarea

Add and resize the background

Place, resize, and frame the photo

Align, group, and rotate the picture

Arrange ribbons and flower

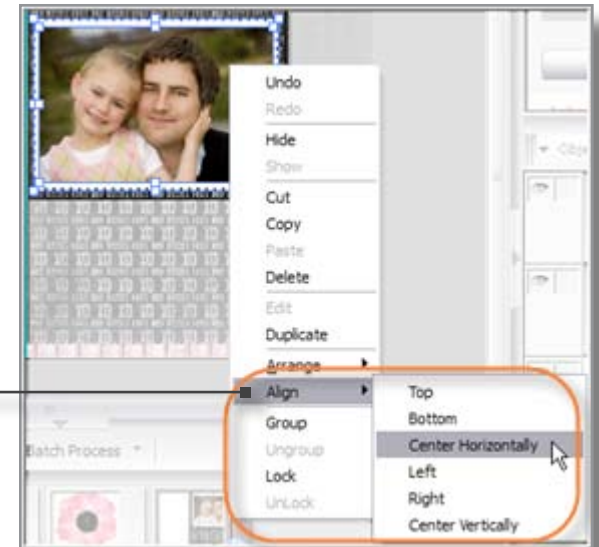
Add and color text

Add finishing touches

We need to make sure that the border and photo are centered. Use the Object Palette to select the photo and the border by holding down the **Shift** key and clicking both objects.

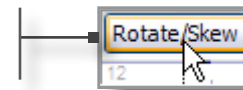


**Right-click** the two selected objects in the work area, and then click **Align | Center Horizontally**. **Right-click** again and select **Align | Center Vertically**.

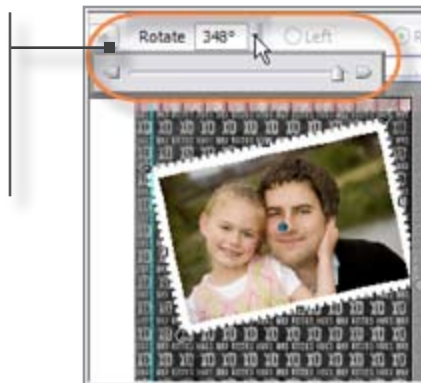


While the two objects are selected, press **Ctrl + G** to group them. This prevents them moving accidentally.

Keep the group selected, and click **Rotate/Skew** on the Properties bar.



In the **Rotate** field, type in **348°**, or use the slider to rotate the photo. You can also drag one of the handles around the edges of the group to rotate it.



# ACDSee 9 Photo Editor tutorials > Creating a valentine card

Welcome!

Gather what you need

Create the card workarea

Add and resize the background

Place, resize, and frame the photo

Align, group, and rotate the picture

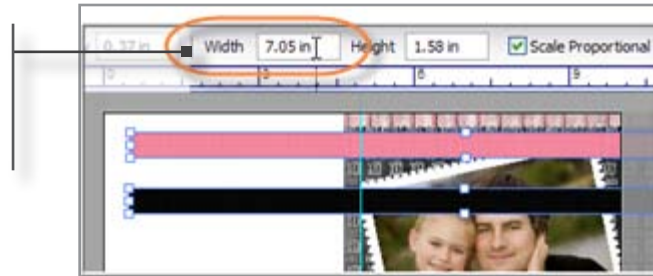
Arrange ribbons and flower

Add and color text

Add finishing touches

Now we are going to add the ribbons and flowers to make the card look like it's gift-wrapped.

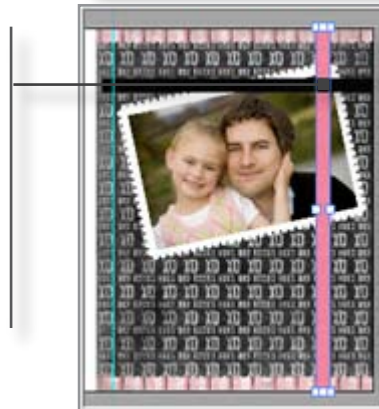
Drag both ribbons onto the card and with both selected, type **7.05 in** (17.96 cm) in the **Width** field to resize them.



Drag the black ribbon into place across the top of the card.

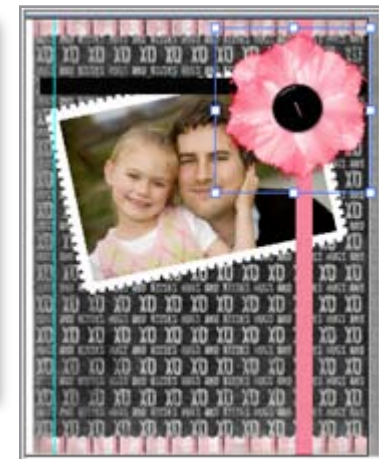
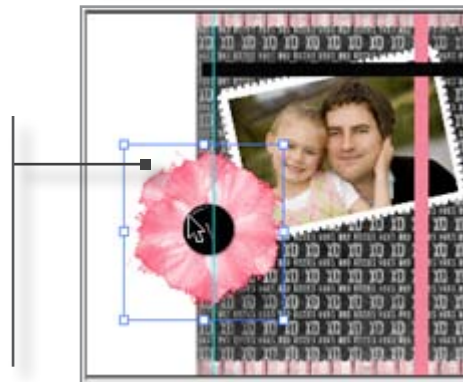
Rotate the pink ribbon by 90°. (Click **Rotate/Skew** on the Properties bar and type **90°** in the **Rotate** field.

Drag the pink ribbon into place on the right side of the card.



Drag the flower onto the card, resize it, and then position it over the intersection of the ribbons.

Move the photo until it looks like you have tucked it under the ribbons.



# ACDSee Photo Editor

# ACDSee 9 Photo Editor tutorials > Creating a valentine card

Welcome!

Gather what you need

Create the card workarea

Add and resize the background

Place, resize, and frame the photo

Align, group, and rotate the picture

Arrange ribbons and flower

Add and color text

Add finishing touches

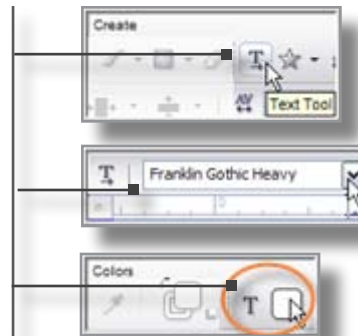
We are almost done. We only have to add the text and tidy up the back of the card. For the text, we chose a bold font Franklin Gothic Heavy. If you don't have that font, any bold font will do.

We added each word of the text separately so that we could size it and color it differently. We made the word **Happy** size **46pt**, **Valentine's** size **44pt**, and **Day** **66pt**.

## White Text:

In the Create section of the toolbar, click the **Text** tool, and then in the Text Properties bar, select **Franklin Gothic Heavy** from the drop-down list.

In the Colors section of the toolbar, select **white** for the text color



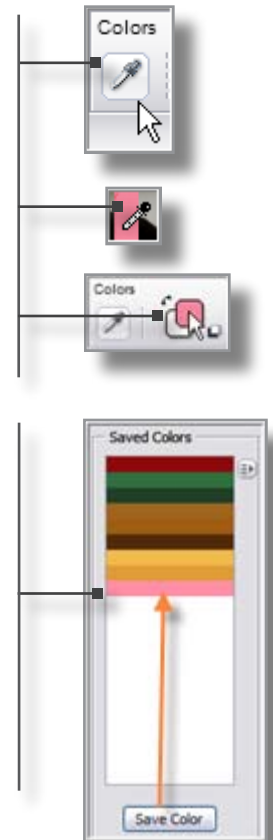
## Pink Text:

To make sure that the pink of the text matches the ribbon, use the **Eyedropper** tool to sample (pick up) the pink of the ribbon.

Click the **Eyedropper** tool and when your cursor changes to an eyedropper, click on the pink ribbon. The Color Picker square changes to show that the pink color is selected.

To use the pink color for text, you need to save it. Double-click the pink square to open the Colors dialog, and then click **Save Color** and **OK**.

Now when you click the **Text** Color Picker, you will see the pink color in the Saved Colors box and you can click on it to select it for your text.



To add text, click near the spot you want to add the text. When your cursor changes to a T-bar, type in the text.





# ACDSee 9 Photo Editor tutorials > Creating a valentine card

Welcome!

Gather what you need

Create the card workarea

Add and resize the background

Place, resize, and frame the photo

Align, group, and rotate the picture

Arrange ribbons and flower

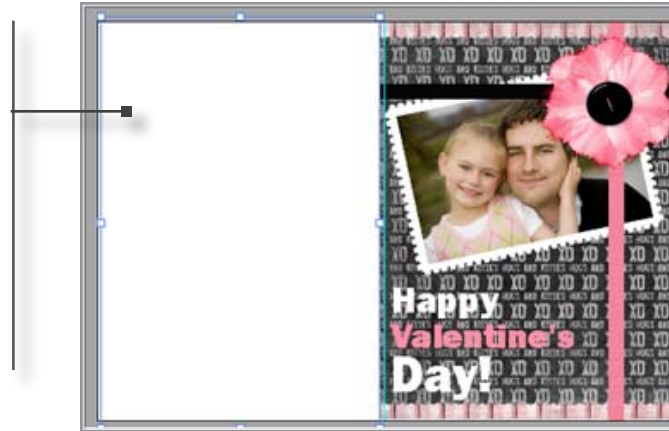
Add and color text

Add finishing touches

The only things left to do are to create a white rectangle to cover the back of the card, and add text to say who made it.

In the Colors section of the toolbar, double-click the top square of the Color Picker and select white in the Colors dialog.

In the Create section of the toolbar, select the **Rectangle** tool and drag a white rectangle over the whole of the back of the card.



Add text to the back of the card, such as **Made with love by...** or **Straight from Samantha and Daddy's card factory!**

Well done! You now have a beautiful and unique card that will mean so much more to the person you love.

We hope you enjoyed the tutorial as much as we enjoyed designing it for you.!

Copyright ACD Systems Ltd.  
2261-C Keating Cross Road  
Victoria, BC  
V8M 2A5  
p 250-544-6701  
f 250-544-0291  
[www.acdsee.com/support](http://www.acdsee.com/support)